



BECKER COUNTY BOARD OF COMMISSIONERS

Regular Meeting

Date: Tuesday, January 6, 2026 at 8:15 AM

Location: Board Room, Courthouse

or

Virtual TEAMS Meeting Option

Call-In #: 763-496-5929 - Conference I.D.: 295 836 766#

- 7:00 Quarterly Joint Governance Meeting - Hosted by City of Detroit Lakes: City Hall Community Room 1025 Roosevelt Ave Detroit Lakes, MN
- 8:15 Call the Board Business Meeting to Order: Board Chair Meyer
1. Pledge of Allegiance
 2. Recognition of Commissioner Meyer
- 8:20 Election of Board Chair for 2026
1. Request for Nominations
 2. Vote Taken and New Chair Elected
- 8:30 New Board Chair Calls for Nominations for Vice-Chair 2026
1. Request for Nominations
 2. Vote Taken and New Vice-Chair Elected
- 8:40 2026 Committee Assignments
1. 2026 Committee Assignments **3**
 2. Commissioner Per Diems: Additional Meetings not on the Committee List
- 8:55 Break
- 9:00 Regular Business
1. Agenda Confirmation
 2. Minutes of December 16, 2025 **5**
- 9:10 Consent Agenda
1. Auditor-Treasurer: Regular Claims, Auditor Warrants, and Claims over 90 Days **9**
 2. Auditor-Treasurer: Resolution 01-26-1A - 2026 Publication Bids **10**
 3. Auditor-Treasurer: Resolution 01-26-1B - Charitable Gambling for Lake Park Baseball at Roadhouse in Cormorant Twp **13**
 4. Auditor-Treasurer: Resolution 01-26-1C - Bank Designation **14**
 5. Auditor-Treasurer - Resolution 01-26-1D - Debt Service **15**
 6. Human Services: Regular Claims, Public Health, and Transit
 7. Highway: Resolution 01-26-1E - Annual Advertising Notice **16**
 8. Land Use: NRM/Parks & Rec - 2026 NRM Annual Business Bid Solicitation Items/Timber Sales **17**
 9. Land Use: NRM/Parks & Rec - Tree Seedling Production Quote **19**
 10. Sheriff: Emergency Management Performance Grant **20**
 11. Sheriff: Off Highway Vehicle Grant Contract Agreement **23**
 12. Sheriff: Snowmobile Safety Enforcement Grant Program **24**

9:15 Commissioners

1. Open Forum
2. Reports and Correspondence
3. Appointments

9:35 County Administrator

1. Minnesota Power for the Maple River to Cuyuna 345 kV Transmission Line Project: presented by Drew Janke 25
2. Minnesota Red River Valley Development Assn: presented by Bruce Hein 46
3. 245th Ave Discussion: presented by Mike Engum and Detroit Twp Members
4. Becker County Museum: presented by Becky Mitchell
5. Report
6. Resolution 01-26-1F - Setting of Minimum Salary for Elected Officials 54

10:20 Land Use

1. NRM/Parks & Rec
 - a) Dunton Locks Shelter Renovation Estimate 55
 - b) Purchase Request - Tractor and Boom Mower 58
2. Environmental Services
 - a) Purchase Request - Walking Floor Trailer 64
 - b) Purchase Request - Diagnostic Scan Tool 83

10:30 Sheriff

3. Purchase Request: Five (5) Squad Cars 87

Closed Session - Attorney Client Privilege

1. Motion to close the meeting pursuant to Minn. Stat 3D.05 Subd. 3(b) 88

Closed Session - Attorney Client Privilege

1. Motion to close the meeting pursuant to Minn. Stat 3D.05 Subd. 3(b)

Adjourn



2026 AMC APPOINTMENTS

2026 AMC MEMBER COUNTY INFORMATION

2026 County Board Chair	
2026 Vice Chair	

2026 AMC POLICY COMMITTEE APPOINTMENTS

*Counties must appoint at least one commissioner or county official to each of the five AMC policy committees.
Individuals may not serve as a voting member on more than one policy committee.*

Policy Committee	2026 Policy Committee Member
Environment & Natural Resources Policy Committee	
General Government Policy Committee	
Health & Human Services Policy Committee	
Public Safety Policy Committee	
Transportation & Infrastructure Policy Committee	

2026 AMC VOTING DELEGATE APPOINTMENTS

*Please type (or clearly print) the names of your county's appointed AMC Voting Delegates for 2026 in the spaces below.
Voting delegates are permitted to cast votes on behalf of one's county during official AMC meetings/business.*

1		ARTICLE 8: ASSOCIATION DELEGATES & DISTRICTS Section 1. Association Delegates Each member county shall be entitled to a number of delegates equal to three more than the number of persons on the board of county commissioners of the member county. Delegates shall be appointed annually by the county board from among the officials and employees of the county. Each delegate so appointed shall be eligible to vote at any meeting of the Association or to be elected an officer or director of the Association. The right to vote at any meeting of the Association or to hold an office or directorship in the Association shall terminate when such person ceases to be a delegate from a member county or the county that delegate represents ceases to be a member of the Association. A vacancy in the office of delegate shall be filled by the county board for the unexpired term.
2		
3		
4		
5		
6		
7		
8		

Please enter this information using the [online form linked here](#).

If you have any issues, please contact Matthew Cook via mcook@mncounties.org

	A	B	C	D
1	COMMITTEE LIST FOR 2025: By Commissioner	Commissioner 2025	Commissioner 2026	MEETING TIMES
2	Association of MN Counties Indian Affairs Advisory Committee (AMC)	Hansen		On Call
3	AMC Environment & Natural Resources Policy Committee	Nelson		On Call
4	AMC General Government Policy Committee	Vareberg		On Call
5	AMC Health & Human Services Policy Committee	Jepson		On Call
6	AMC Public Safety Policy Committee	Meyer		On Call
7	AMC Transportation & Infrastructure Policy Committee	Hansen		On Call
8	Becker County Children's Initiative	Jepson		Quarterly
9	Becker County Extension Service	Nelson/Jepson		Monthly
10	Becker County Fair Board	Jepson/Meyer		Monthly
11	Becker County Soil & Water Conservation District	Nelson		Monthly
12	Courthouse Committee	Meyer/Nelson		Monthly
13	Detroit Lakes/Becker County Airport Committee	Hansen		Monthly
14	Development Achievement Center	Meyer		Monthly
15	Ditch Committee	Hansen		On Call
16	Economic Development/Housing Authority	Jepson/Vareberg		Monthly
17	Environmental Affairs Committee	Hansen/Vareberg		Monthly
18	Finance Committee - Chair	Meyer		Bi-Monthly
19	Finance Committee - Vice-Chair	Jepson		Bi-Monthly
20	Heartland Multi-Purpose Recreational Trail	Meyer/Hansen		On Call
21	Highway Committee	Hansen/Vareberg		Monthly
22	Becker County Historical Society	Meyer		Monthly
23	Human Services Committee	Jepson/Vareberg		Monthly
24	Joint Powers Board of MN Counties	Nelson		Quarterly
25	Juvenile Detention Center (West Central Reg. Juv. Ctr. - WCRJC)	Jepson		Quarterly
26	Labor Negotiating Committee	Meyer/Jepson		On Call
27	Lake Agassiz Regional Library	Nelson		Every other Month
28	Lakeland Mental Health	Nelson		Monthly
29	Law Library Board of Trustees	Hansen		On Call
30	Mahube-OTWA	Jepson		Monthly
31	MCIT Board of Delegates	Meyer		On Call
32	Minnesota Rural Broadband Coalition	Hansen		On Call
33	Minnesota Rural Counties (MRC)	Nelson		On Call
34	Natural Resources Committee	Vareberg/Nelson		Monthly
35	Partnership4Health Board	Meyer/Vareberg (Alt)		On Call
36	Planning & Zoning (Ex. Officio)	Jepson/Hansen		Monthly
37	Prairie Lakes Municipal Solid Waste Authority (PLMSWA)	Hansen/Vareberg		Monthly
38	Recreational Advisory Committee (RAC)	Hansen/Jepson		Monthly
39	Regional Radio Board (NW Reg. Emergency Communications Board)	Meyer/Hansen		Quarterly
40	Salary Review Board for Dept. Heads & Elected Officials	Meyer/Jepson		On Call
41	Safety Committee	Vareberg		Monthly
42	Sheriff's Committee	Meyer/Nelson		Monthly
43	Sunnyside	Nelson/Meyer		Every other Month
44	Transit Advisory Committee	Meyer/Hansen		Monthly
45	Watershed Districts Advisory Board: Buffalo/Red	Nelson		On Call
46	Watershed Districts Advisory Board: Cormorant	Nelson		On Call
47	Watershed Districts Advisory Board: Pelican	Hansen		On Call
48	Watershed Districts Advisory Board: Wild Rice	Nelson		On Call
49	West Central Initiative - Economic Development District (EDD) Board	Meyer/Vareberg		Quarterly
50	West Central/Land of the Dancing Sky Area Agency on Aging	Meyer		Quarterly
51	Zoning Ordinance Review Committee	Nelson/Hansen		On-Call
52	Wild Rice Watershed District - One Watershed One Policy Committee	Nelson		On-Call
53	Ottertail - One Watershed One Policy Committee	Hansen		On-Call
54	Benefits Committee	Nelson/Jepson		Quarterly
55	Crow Wing One Watershed One Policy Committee	Jepson		Quarterly
56	Lakes Country Services Co-op	Meyer		Monthly
57	Senior Council	Jepson		Monthly
58	Cornerstone	Jepson		
59	WE Committee	Vareberg/Jepson		On-Call
60	Any and all Board members may serve as alternate members, as needed.			

BOARD MEETING AS POSTED

BECKER COUNTY BOARD OF COMMISSIONERS

DATE: TUESDAY, December 16, 2025 at 8:15 am

LOCATION: Board Room, Courthouse

1. Meeting was brought to order by Chair Meyer. Commissioners in attendance: Meyer, Jepson, Hansen, Vareberg and Nelson, County Administrator Carrie Smith, and minute taker Peggy Martin.
2. Pledge of Allegiance.

Agenda/Minutes:

1. Agenda – Motion and second to approve the agenda with the following changes: Add a Fair Board presentation and the Summary of the County Administrator's Performance Review (Jepson, Nelson) carried.
2. Minutes – Motion and second to approve minutes of December 2, 2025 and December 11, 2025 with the requested changes (Nelson, Hansen) carried.

Commissioners:

1. Open Forum:
 - None.
2. Fair Board Report. Presented by: Travis Schauer, Karla Lindquist, and Casey Christensen.
 - 2025 Fair – Above expectations even with the road construction around the facility.
3. Detroit Lakes – Becker County Airport Update: presented by Mark Hagen.
 - Joint Powers Agreement between Detroit Lakes and Becker County.
 - Updates to runways, fencing, lighting, medical helicopter building, new fueling system.
 - Airport usage is tracked by fuel usage.
4. Appointments:
 - Motion and second to appoint Mike Moe to the Airport Commission to fulfill the remainder of a vacated term ending in September 2026 (Hansen, Nelson) carried.
 - Motion and second to reappoint Ellis Peterson to the Cormorant Lakes Watershed District Board (Nelson, Hansen) carried.
5. Reports and Correspondence: Reports were provided on the following meetings:
 - Commissioner Hansen – MAGIC Fund Appt., Planning & Zoning, Highway, AMC.

- Commissioner Jepson – AMC, Human Services, Partnership4Health.
- Commissioner Nelson – AMC.
- Commissioner Vareberg – AMC, Highway.
- Commissioner Meyer – AMC, Partnership4Health, Historical Society, LCSC.

6. Summary of County Administrator Carrie Smith's Annual Review.

- Great job of communicating.
- Conducts herself in a professional manner.
- Allows Department Heads to do their jobs but holds her ground when warranted.
- Very available and approachable.
- Needs improvement in follow-through and tracking items.
- Finance Committee will renegotiate Carrie's contract to come back to a future meeting for approval.

Consent Agenda

1. Motion and second to approve and accept the following Consent Agenda Items with the addition to the 2026 Waste Hauler Licenses – License 32 to Smith Pro Services, Auditor-Treasurer: Regular Claims, Auditor Warrants and Claims over 90 Days, October 2025 Cash, Sales Tax, and Investment Reports, Resolution 12-25-2E – Election Grant Acceptance, Resolution 12-25-2J – Erie Township Four Corners Lions Club Raffle at the Fish Bowl in Erie Twp on 01/21/2026, Human Services: Regular Claims, Public Health, & Transit, Human Resources: Resolution 12-25-2D – 2026 Non-Union COLA, Assessor: Abatements in the amount of \$698, Highway: Resolution 12-25-23H – Final Payment – Contract 60726, Land Use: Resolution 12-25-2L – 2026 Waste Hauler Licenses (Nelson, Hansen) carried.

County Administrator: presented by Carrie Smith.

1. Report.
 - Attended the AMC Annual Conference with the Commissioners.
 - Discussion with the Department of Corrections regarding internal training to backup the ICWIC Crew Leader.
 - Discussion - Joint Legislative Meeting with the City of Detroit Lakes, School Districts and Becker County.
 - Discussion – Security Law 480.45 and 480.50 – Real Property Notice.
 - County Buildings will be closing at noon on December 24.
 - Last week of Leadership Training.

2. Motion and second to approve Resolution 12-25-2B – 2026 Commissioner Meeting Schedule (Nelson, Jepson) carried.
3. Motion and second to approve Resolution 12-25-2C – 2026 Commissioners Salaries and Per Diem Rates (Nelson, Jepson) carried.
4. Motion and second to approve Resolution 12-25-2K – Fund Transfer and Year End Bills Payment (Hansen, Nelson) carried.

Auditor-Treasurer: presented by Mary Hendrickson.

1. Motion and second to approve Resolution 12-25-2A – 2026 Certified Levy (Jepson, Hansen) carried.
2. Motion and second to approve The Towers LLC Option and Lease – Parcel 09.7154.001 contingent on the approval of the Planning and Zoning Conditional Use Permit (Nelson, Jepson) carried.

Human Services: presented by Denise Warren.

1. Motion and second to approve the DHS 2026 CMH Screening Grant (Nelson, Jepson) carried.
2. Motion and second to approve the Frazee/Vergas School Agreement for CTC/Preschool Screening Revision and the Detroit Lakes School Agreement for CTC/Preschool Screening Revision (Nelson, Jepson) carried.
3. Motion and second to approve the 2026 Annual Contract Renewals (Jepson, Hansen) carried.
4. Motion and second to approve Partnership4Health Joint Powers Agreement, Bylaws and Delegation Agreement (Nelson, Jepson) carried.

Highway: presented by Jim Olson.

1. Motion and second to approve Resolution 12-25-2F – Reaffirmation of Transit (SMART) Tax (Nelson, Hansen) carried.
2. Motion and second to approve Resolution 12-25-2G – 2026-2030 5-Year Plan (Hansen, Vareberg) carried.
3. Motion and second to approve Resolution 12-25-2I – Construction Agreement with the City of Detroit Lakes with modifying the contract language regarding reconstruction of the boat launch (Hansen, Vareberg) carried.

Planning & Zoning: presented by Kyle Vareberg.

1. Planning Commission Recommendations 12/03/2025.

- Motion and second to concur with the Planning Commission to approve for Vertical Bridge on behalf of Becker County Tax Forfeited Land – Request a Conditional Use Permit to construct a two hundred fifty-five (255) foot self-support cellular tower with a ten (10) foot lightning rod with the addition to 365 feet fall zone from the cabin on the Tax Forfeited Land (Nelson, Jepson) carried.

Being no further business, Board Chair Meyer adjourned the meeting at 10:09 am.

/s/ Carrie Smith
Carrie Smith
County Administrator

/s/ David Meyer
David Meyer
Board Chair



BECKER COUNTY BOARD OF COMMISSIONERS

Finance Committee Meeting

Date: Monday, January 5, 2026 at 8:30 AM

Location: 1st Floor – Board Meeting Room - Courthouse
915 Lake Avenue, Detroit Lakes, MN

County Administrator

1. Report

Auditor-Treasurer

1. Regular Claims, Auditor Warrants, & Over 90 Days
2. Resolution 01-26-1A - 2026 Publication Bids
3. Resolution 01-26-1C - Bank Designations
4. Resolution 01-26-1D - Debt Service
5. Human Services: Regular Claims, Public Health, & Transit

Land Use

1. NRM/Parks & Rec
 - a) Tree Seedling Production Quote
 - b) Dunton Locks Shelter Renovation Estimate
 - c) Purchase Request - Tractor and Boom Mower
2. Environmental Services
 - a) Purchase Request - Walking Floor Trailer
 - b) Purchase Request - Diagnostic Scan Tool

Sheriff

1. Purchase Request: Five (5) Squad Cars
2. Emergency Management Performance Grant
3. Off Highway Vehicle Grant Contract Agreement
4. Snowmobile Safety Enforcement Grant Program

Adjourn

**BECKER COUNTY AUDITOR-TREASURER
SUMMARY OF PUBLICATION BIDS
2026**

	Frazee Forum	DL Saturday
Sample Notice:	\$45.28	\$62.50
Legal Notice:	\$8.00	\$10.00
Financial Statement 1st Publication:	\$8.00	\$10.00
Financial Statement 2nd Publication:	\$8.00	\$8.00
Delinquent Listing 1st Publication:	\$8.00	\$10.00
Delinquent Listing 2nd Publication:	\$8.00	\$8.00
Weekly Publication:	Tuesday	Saturday
Deadlines for Publishing:	Friday at 12:00	Thursdays at 9:00
Distribution:	1,041	1,597
Digital:	183	2,294
Distribution Area:	Newstands Detroit Lakes Frazee Vergas Wolf Lake Perham	Newstands & Carriers Detroit Lakes Frazee Lake Park Audubon Ogema Rochert Callaway Vergas Waubun Ponsford Perham

RESOLUTION 01-26-1A Option 1

Publication Bid 2026

Page 11 of 88

RESOLUTION 01-26-1A Option 2 Publication Bid 2026

Page 12 of 88

RESOLUTION NO. 01-26-1B

MINNESOTA LAWFUL GAMBLING RESOLUTION

RESOLVED, the Becker County Board of County Commissioners agree to approve the Gambling Application #LG220 for Exempt Permit to conduct a raffle by LPA Baseball Association, at Roadhouse, 11740 County Hwy 5, Lake Park, MN 56554, in Cormorant Township.

Duly adopted at Detroit Lakes, Minnesota, this 6th day of January 2026.

ATTEST:

COUNTY BOARD OF COMMISSIONERS

Chair

State of Minnesota)

)
County of Becker)

I, the undersigned, being the duly elected, qualified and Auditor-Treasurer for the County of Becker, State of Minnesota, do hereby certify that the foregoing is true and correct copy of a resolution passed and adopted by the County Board of Commissioners at a meeting held January 6, 2026, as recorded in the record of proceedings.

Becker County Auditor-Treasurer

MEH/mco

SEAL

BECKER COUNTY BOARD OF COMMISSIONERS

RESOLUTION 01-26-1C

Bank Designations

WHEREAS, Per Minnesota Statute 118A.02 the County Board designates banks and delegates the authority for investments.

WHEREAS, Per Minnesota Statute 471.38 subd 3a the board annually delegates the authority for electronic funds transfers.

WHEREAS, American National Bank, Bremer Bank NA, Deerwood Bank, Midwest Bank, PFM Asset Management LLC, Raymond James, State Bank of Lake Park, United Community Bank of Frazee, Wells Fargo Advisors

WHEREAS, the designated signatories and initiators are Mary E Hendrickson, Auditor-Treasurer and Tanya D Hockett, Chief Deputy Auditor-Treasurer

NOW THEREFORE BE IT RESOLVED. That the Board of County Commissioners of Becker County, Minnesota, hereby reaffirms the depositories, electronic transfers, signatories and initiators for Becker County.

Duly adopted this 6th day of January 2026, at Detroit Lakes, MN.

COUNTY BOARD OF COMMISSIONERS
Becker County, Minnesota

ATTEST:

/s/ Carrie Smith
Carrie Smith
County Administrator

/s/ _____
Board Chair

State of Minnesota)
) ss
County of Becker)

I, the undersigned being the duly appointed and qualified County Administrator for the County of Becker, State of Minnesota, do hereby certify that the foregoing is a true and correct copy of a Resolution passed, adopted, and approved by the County Board of Commissioners at a meeting held January 6, 2026, as recorded in the record of proceedings.

Carrie Smith
County Administrator

BECKER COUNTY BOARD OF COMMISSIONERS

RESOLUTION 01-26-1D

DEBT SERVICE

WHEREAS, Becker County uses general obligation bonds to fund capital projects, and

WHEREAS, MN Statute 475.61 gives the Board of Commissioners the authority to use existing fund balance to cover part of the debt payments, and thereby will only levy a portion of the debt service taxes and the amount levied will be credited against the tax required, and

NOW THEREFORE BE IT RESOLVED. That the Board of County Commissioners of Becker County, Minnesota, approves the use of existing fund balance to lower the debt service levy.

Duly adopted this 6th day of January 2026, at Detroit Lakes, MN.

COUNTY BOARD OF COMMISSIONERS
Becker County, Minnesota

ATTEST:

/s/ Carrie Smith
Carrie Smith
County Administrator

/s/ _____
Board Chair

State of Minnesota)
) ss
County of Becker)

I, the undersigned being the duly appointed and qualified County Administrator for the County of Becker, State of Minnesota, do hereby certify that the foregoing is a true and correct copy of a Resolution passed, adopted, and approved by the County Board of Commissioners at a meeting held January 6, 2026, as recorded in the record of proceedings.

Carrie Smith
County Administrator

BECKER COUNTY BOARD OF COMMISSIONERS

RESOLUTION 01-26-1E

Notice of Annual Highway Construction Advertisements

WHEREAS, it has become available and a widely accepted practice that advertisements for bids for highway construction be placed online in place of the traditional printed media;

WHEREAS, the County of Becker maintains a public web page suitable for public advertising,

WHEREAS, the Minnesota Department of Transportation maintains a public web page offering a common location for all Minnesota Counties to advertise,

WHEREAS, MN Stat, Sec 331A.12 requires publication in the local legal paper stating the intent to use the internet as its primary posting location each year,

NOW THEREFORE BE IT RESOLVED: That the Becker County Board of Commissioners hereby authorizes the County Engineer to advertise as follows:

- Initial advertisements in the Detroit Lakes Tribune stating the intent to utilize internet advertising
- All highway construction advertising for 2026 will be placed on the official Becker County web page and on the MNDOT site www.dot.state.mn.us/stateaid using the EAdvert link.

Duly adopted this 6th day of January 2026, at Detroit Lakes, MN.

COUNTY BOARD OF COMMISSIONERS
Becker County, Minnesota

ATTEST:

/s/ Carrie Smith

Carrie Smith
County Administrator

/s/ _____
Board Chair

State of Minnesota)
) ss
County of Becker)

I, the undersigned being the duly appointed and qualified County Administrator for the County of Becker, State of Minnesota, do hereby certify that the foregoing is a true and correct copy of a Resolution passed, adopted, and approved by the County Board of Commissioners at a meeting held January 6, 2026, as recorded in the record of proceedings.

Carrie Smith
County Administrator



COUNTY OF BECKER

Natural Resources Management

1771 North Tower Road, Detroit Lakes, MN 56501

218-847-0099

January 6, 2026

MEMORANDUM FOR ACTION

SUBJECT: 2026 Tax Forfeited Timber Sale Auction Dates

The Becker County Natural Resource Management (NRM) Office would like to set the dates for the 2026 timber sale auctions for Friday, May 1st and Friday, October 2nd, 2026. This has been approved by the NRM Committee and will be posted on the NRM Webpage. Tracts to be offered for auction will come before the NRM Committee and Becker County Board for approval prior to auction.

Action: Request to approve the Tax forfeited Timber Sale Auction dates of Friday May 1, 2026, and Friday October 2, 2026.

SUBJECT: Seek bids/quotes for fiscal year 2026 NRM annual business.

The approval to **award** the bids/ quotes received will come before the NRM Committee and/or Board if desired. Rough timelines are listed below.

- A. 2028 Tree Seedlings – Request December 2026/ Award January 2027
- B. 2026 Tree Planting – Request February 2026/ Award March 2026
- C. 2026 Site preparation – Request March 2026/ Award June 2026
- D. 2026 Bud Capping – Request March 2026/ Award July 2026
- E. 2026 Forest Road Maintenance/Brushing – Seek Hourly/Equipment Rates.
- F. 2026 Bathroom Facilities/Porta Pottey's-Request March/Award April 2026

Action: Request to approve authorization to go out for bid for 2026 NRM Annual Business.

The Point of contact for this memorandum:

Steve Skoog/Mitch Lundeen, Land Use Department/ NRM

1/6/2026

To: Becker County Board of Commissioners

From: Steve Skoog/Mitch Lundeen, Land Use Department/ NRM

Request: Board motion to award the 2026 Tree Seedling Contract to PRT USA Inc. at \$307.30 per thousand for Red Pine, \$257.00 per thousand for Jack Pine, and \$330.00 per thousand for White Spruce for an estimated contract total of \$22,357.50

Narrative:

Request for bids to produce 75,000 containerized tree seedlings for the 2027 season. Bid opening took place on Tuesday 12/23/2025 at 3:00 pm. Request for Bids were published twice in the paper and vendors were notified. One bid was received.

Summary of Bids Received for 2026 Tree Seedlings

Bidder	Address	\$ per thousand	# of Trees	Total
PRT USA Inc.	4653 Bishop Lake Rd. Howell, MI 48843	\$ 307.30 Red Pine	25,000	75,000 Trees \$22,357.50
		\$ 257.00 Jack Pine	25,000	
		\$330.00 White Spruce	25,000	

Recommend awarding the contract to:

PRT USA Inc. for an estimated contract total of \$22,357.50; the sole bid received.

History

	Awarded to	\$ per thousand	# of trees	Total
2025	PRT USA Inc	\$270 Red Pine \$250 Jack Pine \$320 White Spruce	50,000 Red Pine 30,000 Jack Pine 20,000 White Spruce	100,000 Trees \$27,400.00
2024	PRT USA Inc.	\$270 Red Pine 250.00 Jack Pine	60,000 Red Pine 40,000 Jack Pine	100,000 Trees \$26,200.00
2023	PRT USA Inc.	\$ 205.00 Red Pine	35,000 Red Pine	100,000 Trees \$21,325.00
		\$ 190.00 Jack Pine	35,000 Jack Pine	
		\$ 250.00 White Spruce	30,000 White Spruce	
2022	PRT USA Inc.	\$ 177.00 Red Pine	40,000 Red Pine	95,000 Trees \$16,840.00
		\$ 166.00 Jack Pine	40,000 Jack Pine	
		\$ 208.00 W. Spruce	15,000 W. Spruce	
2021	PRT USA Inc.	\$162.00 Jack Pine	55,500 Jack Pine	95,000 Trees \$15,824.50
		\$173.00 Red Pine	39,500 Red Pine	

2026 Containerized Tree Seedling BID FORM

SPECIES	STOCK TYPE	CONTAINER SIZE	QUANTITY	QUOTE/ THOUSAND*
Norway Pine	1 + 0	309 / Styro 4A	25,000	\$ 307.30
Jack Pine	1 + 0	309 / Styro 4A	25,000	\$ 257.00
White Spruce	1 + 0	411/Styro 6S	25,000	\$ 330.00
			Total Quote	\$22,357.50

NOTE: Increase in Norway pine cost is due to significant seed cost increases from the ongoing shortage across the region

Bid is to be in U.S. dollars and include all taxes, import/export fees and any other fees that will affect the final price.

Company PRT Growing Services

Address 4653 Bishop Lake Road

Howell, MI 48843

Telephone 501-887-6162

Signature Joe Schumacher

Date 12/16/25

Bids awarded on total bid.

Bids accepted as mailed or emailed.

Completed bids due before 3:00pm on 12/23/2025

Contact Information:

Becker County Natural Resource Management Office
1771 N Tower Road
Detroit Lakes, MN 56501

Email: mitch.lundeen@co.becker.mn.us
erick.barthel@co.becker.mn.us

Becker County reserves that right to refuse any or all bids.



Grant Contract Agreement

Page 1 of 2

Minnesota Department of Public Safety ("State") Homeland Security and Emergency Management Division 445 Minnesota Street, Suite 223 St. Paul, MN 55101-2190	Grant Program: 2024 Emergency Management Performance Grant Grant Contract Agreement No.: A-EMPG-2024-BECKERCO-037
Grantee: Becker County 915 Lake Avenue Detroit Lakes, MN 56501	Grant Contract Agreement Term: Effective Date: 01/01/2024 Expiration Date: 06/30/2026
Grantee's Authorized Representative: Becker County Sheriff Office - Emergency Management ATTN: Adam Douglas – Emergency Management Director 925 Lake Avenue Detroit Lakes, MN 56501 Phone: 218-847-2661 E-mail: adam.douglas@co.becker.mn.us	Grant Contract Agreement Amount: Original Agreement \$ 22,029.00 Matching Requirement \$ 22,029.00
State's Authorized Representative: Homeland Security and Emergency Management ATTN: Ms. Kyle Temme 3925 Pheasant Ridge Drive NE Blaine, MN 55449 Phone: 651-201-7420 E-mail: kyle.temme@state.mn.us	Federal Funding: CFDA/ALN: 97.042 FAIN: EMC-2024-EP-05011 State Funding: None Special Conditions None

Under Minn. Stat. § 299A.01, Subd 2 (4) the State is empowered to enter into this grant contract agreement.

Term: Per Minn. Stat. § 16B.98, Subd. 5, the Grantee must not begin work until this grant contract agreement is fully executed and the State's Authorized Representative has notified the Grantee that work may commence. Per Minn. Stat. § 16B.98 Subd. 7, no payments will be made to the Grantee until this grant contract agreement is fully executed. Once this grant contract agreement is fully executed, the Grantee may claim reimbursement for expenditures incurred pursuant to the Payment clause of this grant contract agreement. Reimbursements will only be made for those expenditures made according to the terms of this grant contract agreement. Expiration date is the date shown above or until all obligations have been satisfactorily fulfilled, whichever occurs first.

The Grantee, who is not a state employee, will:

Perform and accomplish such purposes and activities as specified herein and in the Grantee's approved 2024 Emergency Management Performance Grant Application ("Application") which is incorporated by reference into this grant contract agreement and on file with the State at 3925 Pheasant Ridge Drive NE, Blaine, MN 55449. The Grantee shall also comply with all requirements referenced in the 2024 Emergency Management Performance Grant Guidelines and Application which includes the Terms and Conditions and Grant Program Guidelines (<https://app.dps.mn.gov/EGrants>), which are incorporated by reference into this grant contract agreement.

Budget Revisions: The breakdown of costs of the Grantee's Budget is contained in Exhibit A, which is attached and incorporated into this grant contract agreement. As stated in the Grantee's Application and Grant Program Guidelines, the Grantee will submit a written change request for any substitution of budget items or any deviation and in accordance with the Grant Program Guidelines. Requests must be approved prior to any expenditure by the Grantee.

ITEM #3



Grant Contract Agreement

Page 2 of 2

Matching Requirements: (If applicable.) As stated in the Grantee's Application, the Grantee certifies that the matching requirement will be met by the Grantee.

Payment: As stated in the Grantee's Application and Grant Program Guidance, the State will promptly pay the Grantee after the Grantee presents an invoice for the services actually performed and the State's Authorized Representative accepts the invoiced services and in accordance with the Grant Program Guidelines. Payment will not be made if the Grantee has not satisfied reporting requirements.

Certification Regarding Lobbying: (If applicable.) Grantees receiving federal funds over \$100,000.00 must complete and return the Certification Regarding Lobbying form provided by the State to the Grantee.

1. ENCUMBRANCE VERIFICATION

Individual certifies that funds have been encumbered as required by Minn. Stat. § 16A.15.

Signed: _____

Date: _____

3. STATE AGENCY

Signed: _____
(with delegated authority)

Title: _____

Date: _____

Grant Contract Agreement No. A-EMPG-2024-BECKERCO-037 / P.O. No. 3000104727

Project No: N/A

2. GRANTEE

The Grantee certifies that the appropriate person(s) have executed the grant contract agreement on behalf of the Grantee as required by applicable articles, bylaws, resolutions, or ordinances.

Signed: _____

Print Name: _____

Title: _____

Date: _____

Signed: _____

Print Name: _____

Title: _____

Date: _____

Signed: _____

Print Name: _____

Title: _____

Date: _____

Distribution: DPS/FAS
Grantee
State's Authorized Representative

2024 (EMPG) Emergency Management Performance Grant

Budget Summary (Review Report)

Organization:
Becker County

EXHIBIT A
A-EMPG-2024-BECKERCO-037

Budget		
Budget Category	Award	Match
Organization		
EM Department Salary and Fringe Benefits	\$22,029.00	\$22,029.00
Total	\$22,029.00	\$22,029.00
Total	\$22,029.00	\$22,029.00
Allocation	\$22,029.00	\$22,029.00
Balance	\$0.00	\$0.00

Encumbrance Form

GENERAL INFORMATION:

Requestor: ADAM BLOCK
Description: OFF HIGHWAY VEHICLE SAFETY GRANT

CONTRACT INFORMATION:

Total Contract Amount: \$14830.68
Effective Date: July 1, 2025
Expiration Date: June 30, 2027
Vendor Name: Becker County Sheriff's Office
Vendor Address: 925 Lake Avenue, Detroit Lakes, MN 56501
Remit to: 915 Lake Ave., Detroit Lakes, MN 56501
Vendor #: 0000197276-001
Contract #: 277512
PO #: FY2026: 3-287670 FY2027:

FUNDING INFORMATION:

Fiscal Year	Speedchart	Fund	FinDeptID	AppropID	Account	CC1	CC2	Amount
2026		2102	R2937714	R297401	441302	27842		\$7415.34
2027		2102	R2937714	R297401	441302	27842		\$7415.34
INCOMING GRANTS OR PROJECT COSTING (IF APPLICABLE)		PC Bus Unit	Project	Activity	Source Type	Category	Sub Category	
Line 1						84101501		\$7415.34
Line 2								
Line 3								
Line 4								

Encumbrance Form

GENERAL INFORMATION:

Requestor: Adam Block
Description: Snowmobile Safety Grant

CONTRACT INFORMATION:

Total Contract Amount: \$12988.2
Effective Date: July 1, 2025
Expiration Date: June 30, 2027
Vendor Name: Becker County Sheriff's Office
Vendor Address: 925 Lake Avenue, Detroit Lakes, MN 56501 REMIT TO: 915 Lake Ave., Detroit Lakes, MN 56501
Vendor # 0000197276-001
Contract #: 278656
PO #: FY2026: 3-288503 FY2027:

FUNDING INFORMATION:

Fiscal Year	Speedchart	Fund	FinDeptID	AppropID	Account	CC1	CC2	Amount
2026		2101	R2937714	R297404	441302	27822		\$6494.1
2027		2101	R2937714	R297404	441302	27822		\$6494.1
INCOMING GRANTS OR PROJECT COSTING (IF APPLICABLE)		PC Bus Unit	Project	Activity	Source Type	Category	Sub Category	
Line 1						84101501		\$6494.1
Line 2								
Line 3								
Line 4								

Maple River – Cuyuna MR-C TRANSMISSION PROJECT

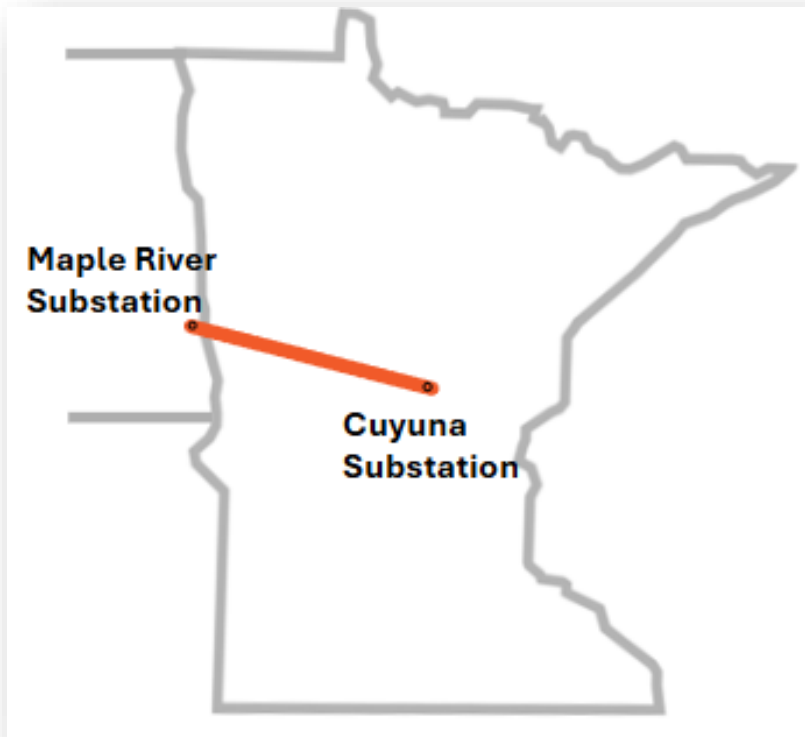
Drew Janke

Minnesota Power
Environmental Compliance
Specialist II

Agenda

- Introductions
- Project Update
- Discussion

About the Project



Minnesota Power, Otter Tail Power Company, and Great River Energy are proposing to construct an approximately 160-mile-long, single-circuit 345 kV transmission line on double-circuit capable structures from Minnesota Power's Cuyuna Substation near Riverton, Minnesota to Otter Tail Power Company's Maple River Substation in eastern North Dakota.

Project Need



Enhance the reliability of the regional transmission system as the way we produce and use electricity changes



Increase transmission system capacity to reliably deliver energy from where it's produced to where it's used



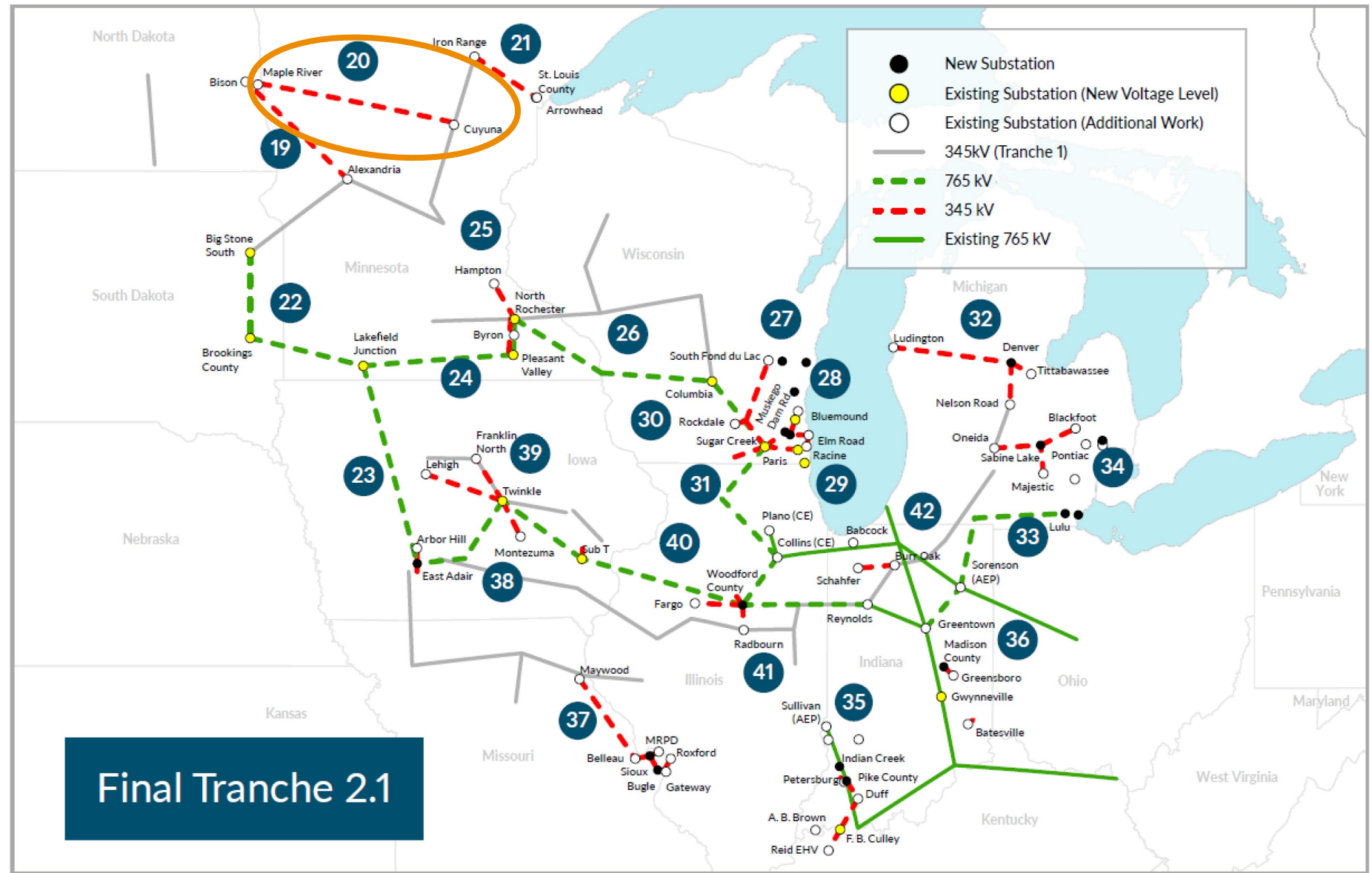
Meet growing electrical demand and enhance resiliency during extreme weather events



Enable cost-effective regional energy transfers supporting economical grid operations

The Midcontinent Independent System Operator (MISO), the regional grid operator, approved this project (#20) as part of a regional plan

Learn more at
misoenergy.org

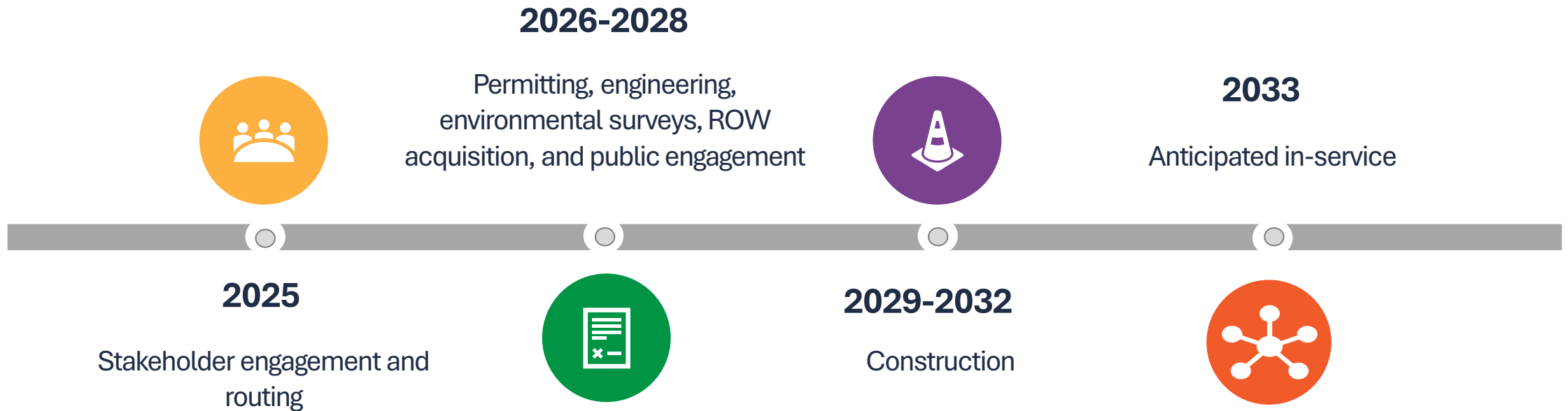


Project Components

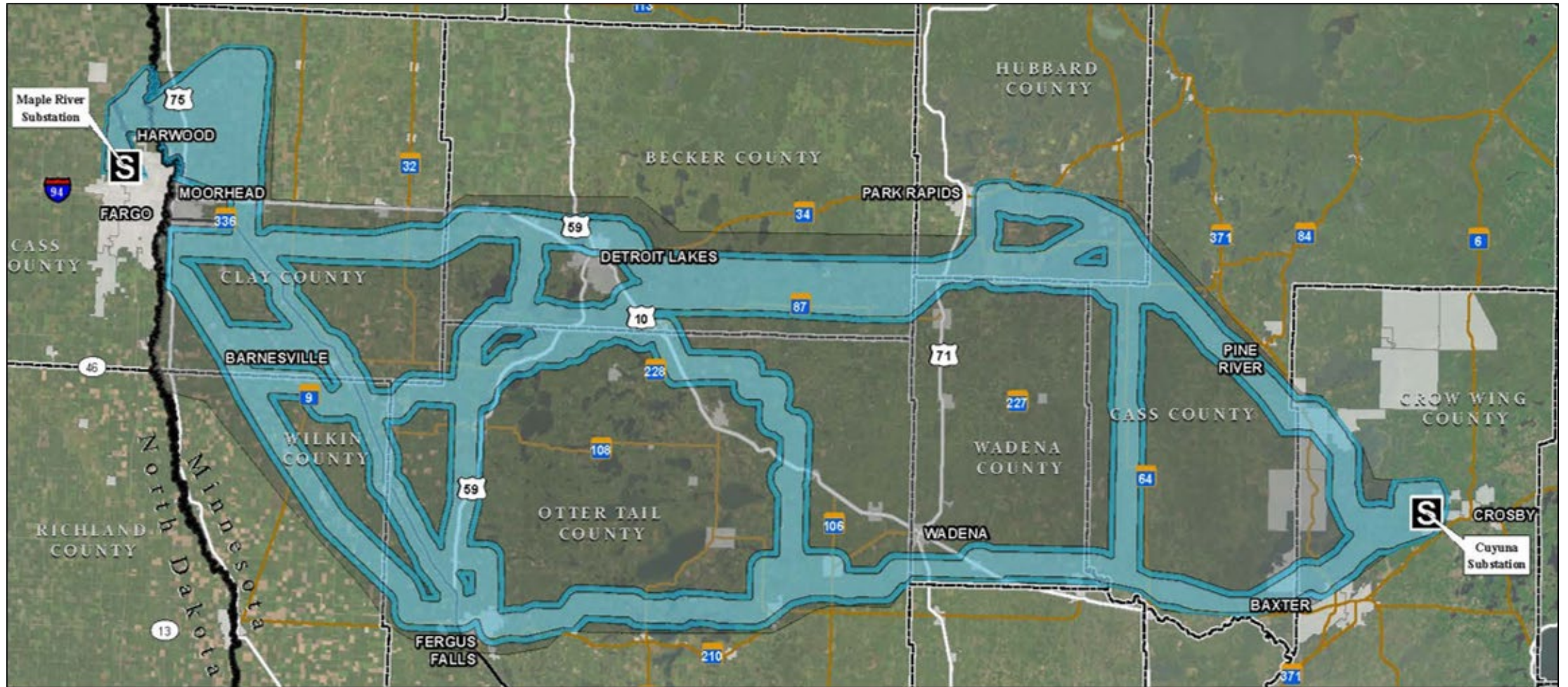
Construction of approximately 160 miles of new single-circuit 345 kilovolt (kV) transmission line, built on double-circuit capable structures, and following existing transmission line corridors when possible

Upgrade of the existing Maple River Substation, located near Fargo, ND, and the Cuyuna Substation, located near Riverton, MN, plus modifications of some existing transmission line corridors, where needed, to bring this project into service

Project Timeline



Initial Study Area with Routing Opportunities based on Existing Transmission Lines – June 2025



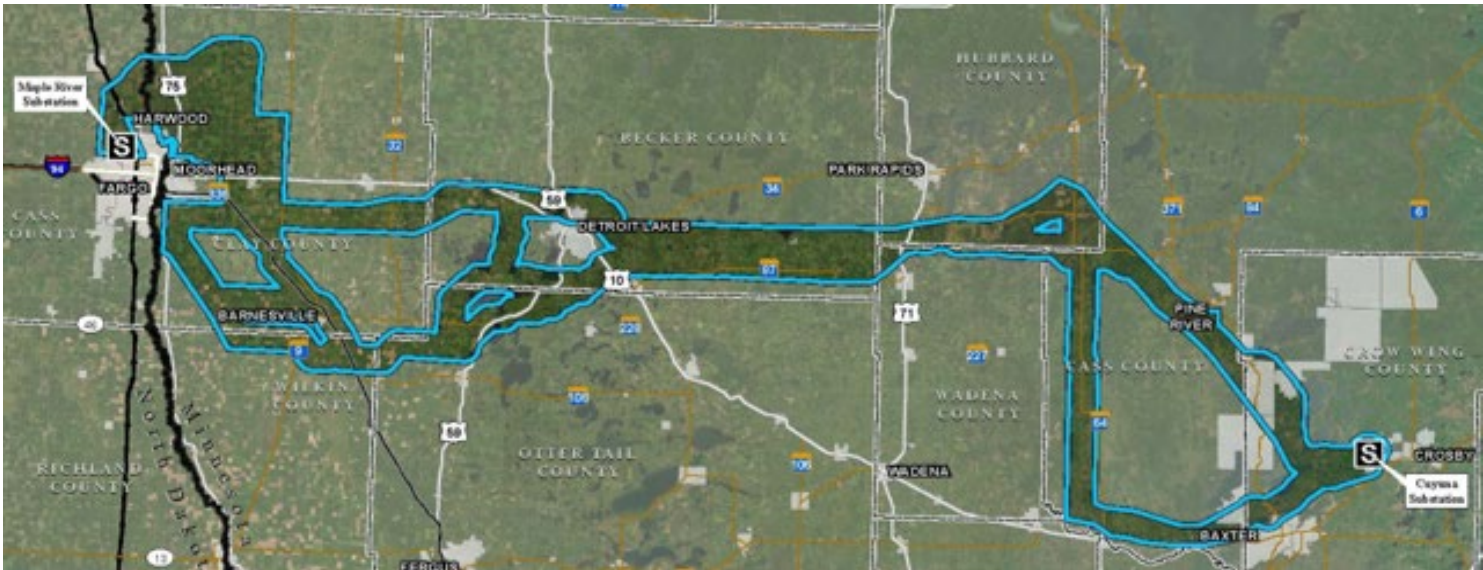
Initial Study Area with Routing Opportunities based on Existing Transmission Lines



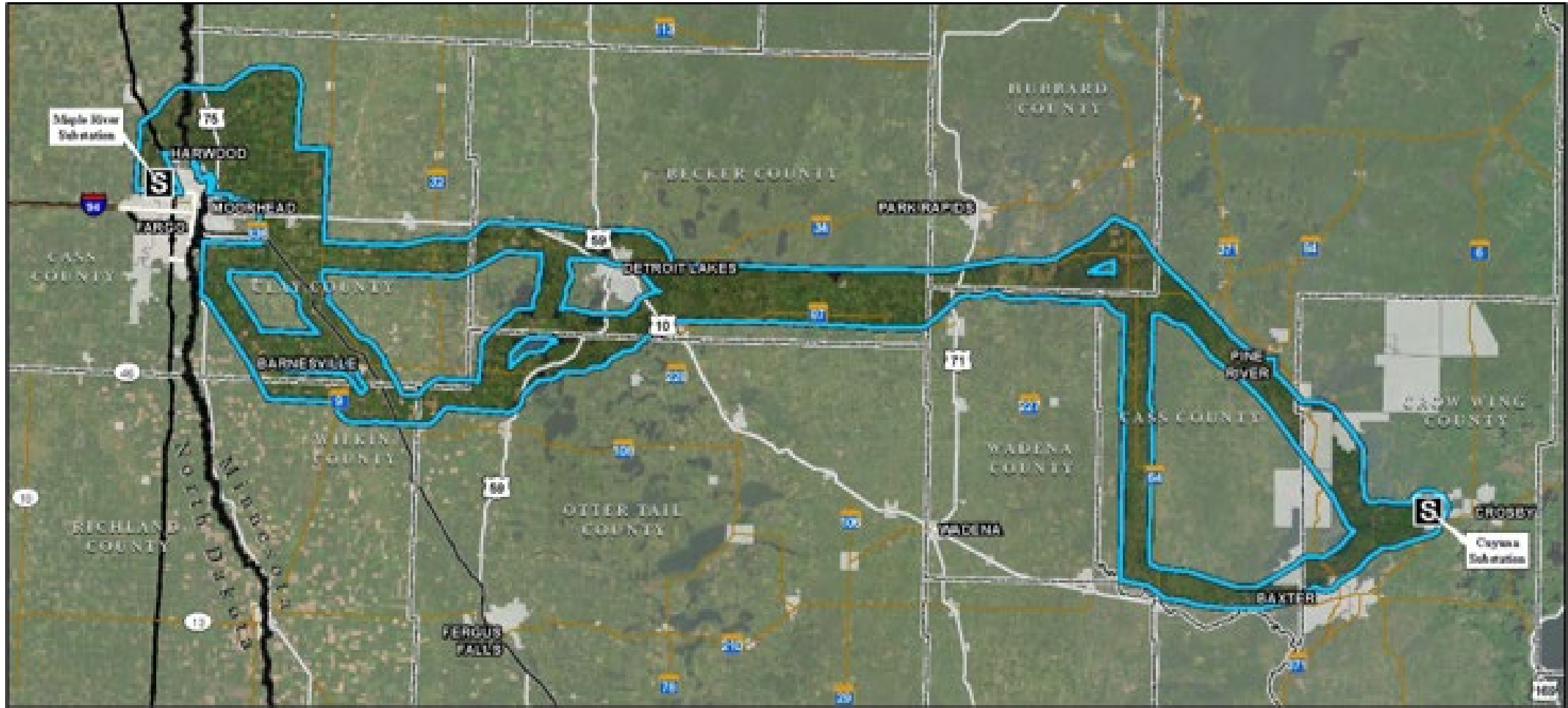
What We've Heard

- Adjacent to proposed or existing projects
- Existing transmission lines on property
- Public lands
- Population proximity
- Cultural Resources

CON Notice Area with Preliminary Routes

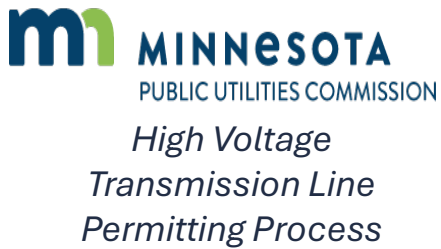


Project Preliminary Routes – October 2025

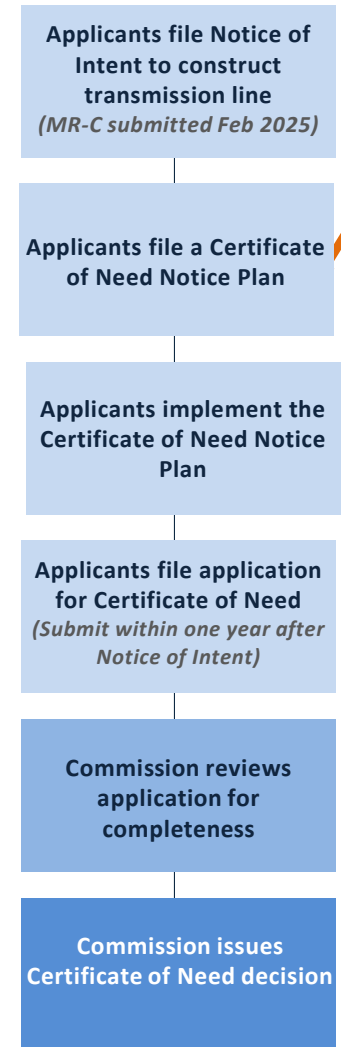


The Preliminary Routes will be evaluated and refined into a preferred route based on stakeholder feedback and engineering and construction considerations

Minnesota Permitting Process

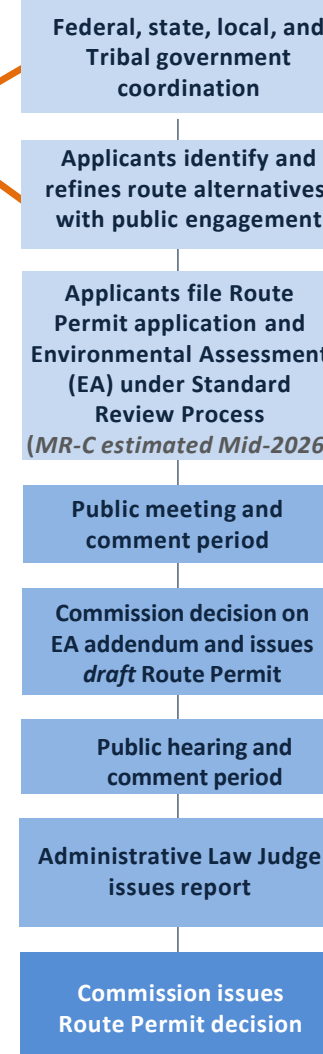


1. Certificate of Need



We are here

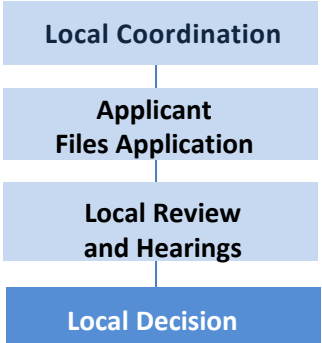
2. Route Permit



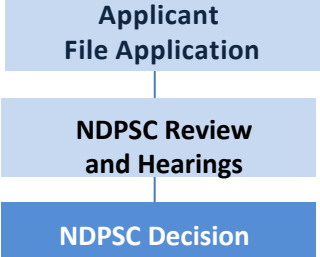
North Dakota Permitting Process



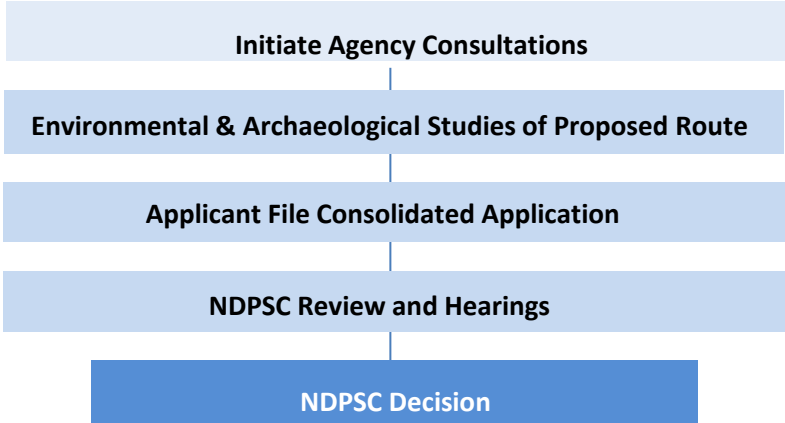
1. County/Township Road Use Permit (TBD)



2. Certificate of Public Convenience and Necessity - ND Public Service Commission

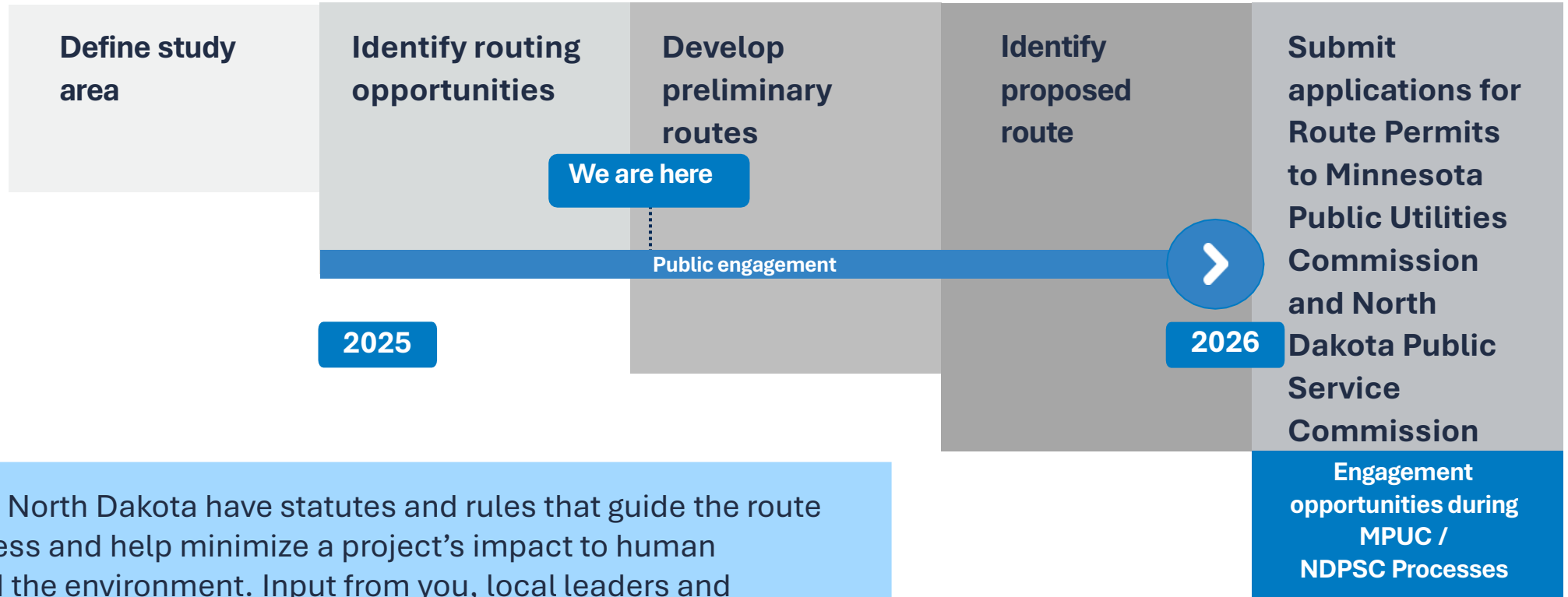


3. Certificate of Corridor Compatibility and Route Permit - ND Public Service Commission



4. Other State and Federal Permits as Required

Routing Process & Input Opportunities



Minnesota and North Dakota have statutes and rules that guide the route selection process and help minimize a project's impact to human settlement and the environment. Input from you, local leaders and agencies as well as our own expertise is critical as we develop and finalize a route.

Routing Process Considerations

The routing process is a combination of routing criteria found in Minnesota and North Dakota statutes and regulations, engineering requirements, constructability needs, and cost considerations. To route a project, we consider:

- Opportunities
- Constraints
- Engineering and construction considerations
- Public input

Anticipated Studies

Field surveys allow the Project team to verify or collect new information to help minimize impacts for construction of the transmission line. Studies may include:

- Geotechnical
- Cultural resources
- Wetland and waterbodies
- Invasive species
- Protected species
- Raptor nests

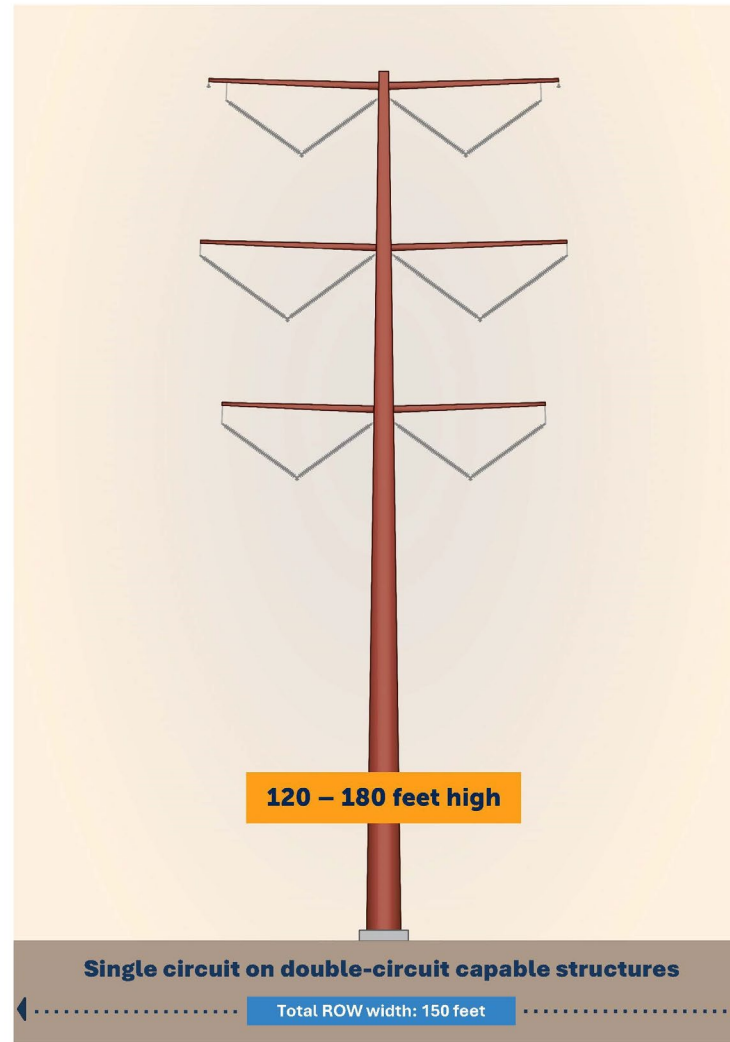


Cypripedium reginae

Typical Design

Structure type factors:

- Land use/land cover
- Topography
- Water/wetlands
- Soil types

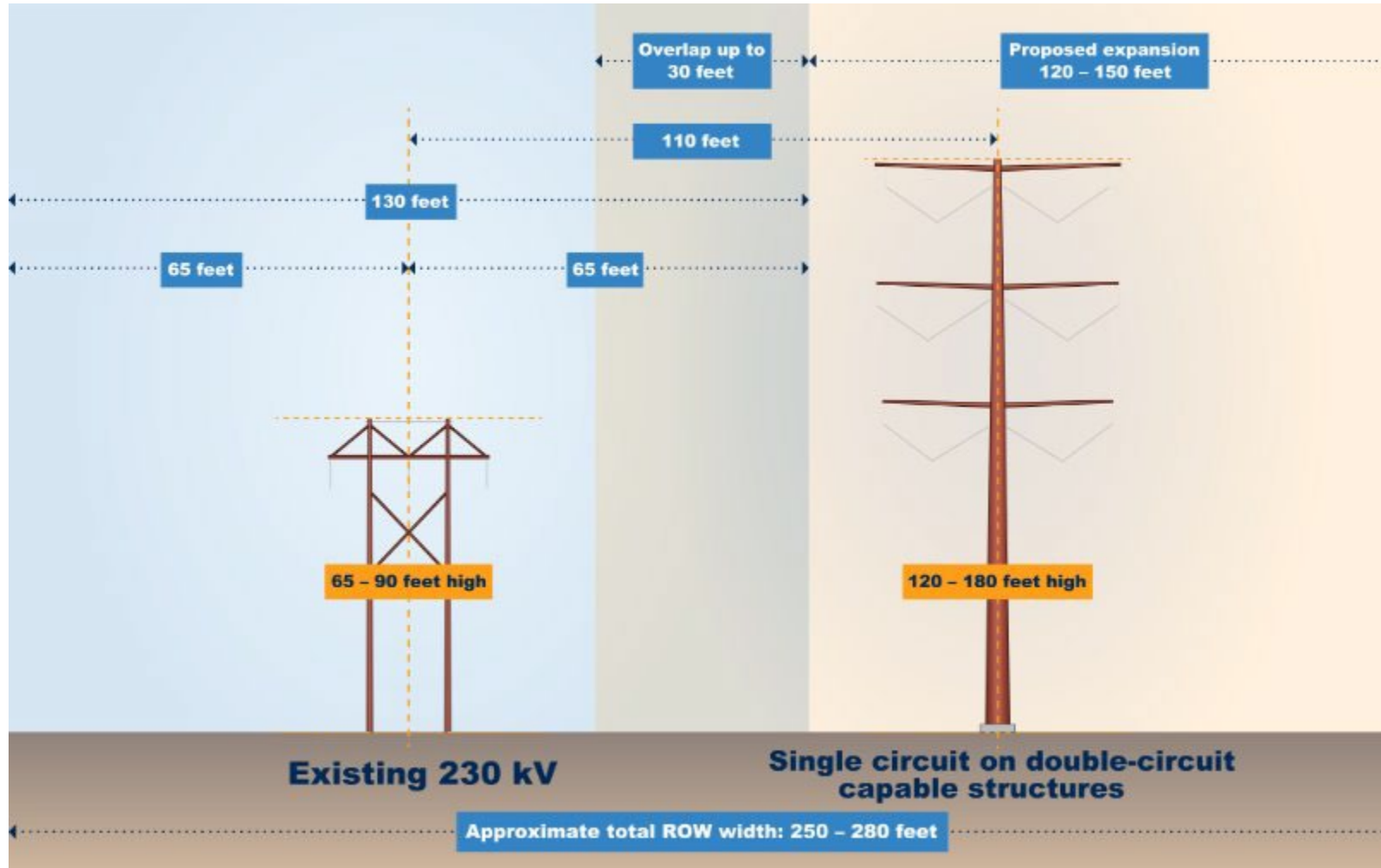


Minimum right-of-way: 150 feet

Avg structures per mile: 5 to 7

Typical height: 120 to 180 feet

Typical Design for Colocation



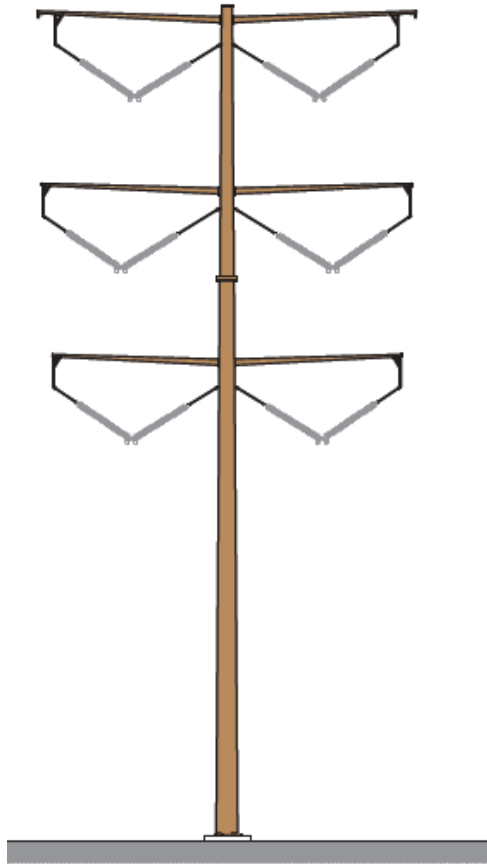
Minimum right-of-way: 250 feet

Avg structures per mile: 5 to 7

Typical height: 120 to 180 feet

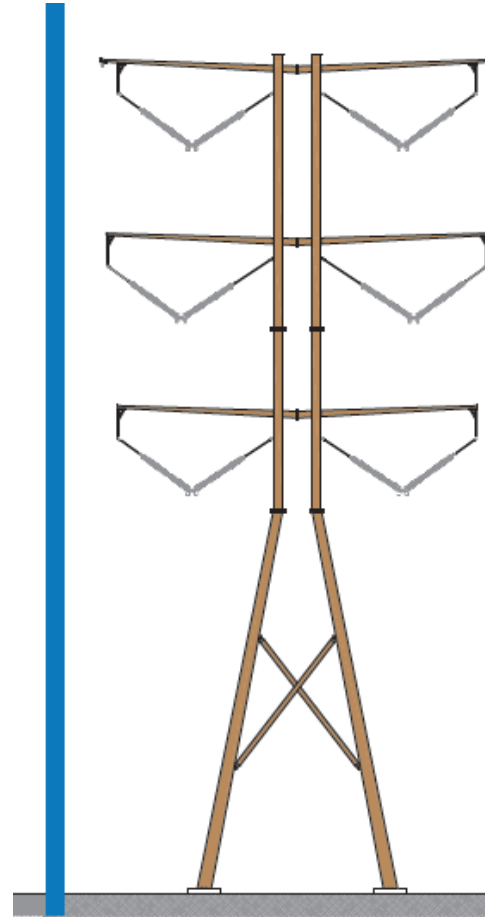
Potential Structure Design Concepts

Tubular Monopole

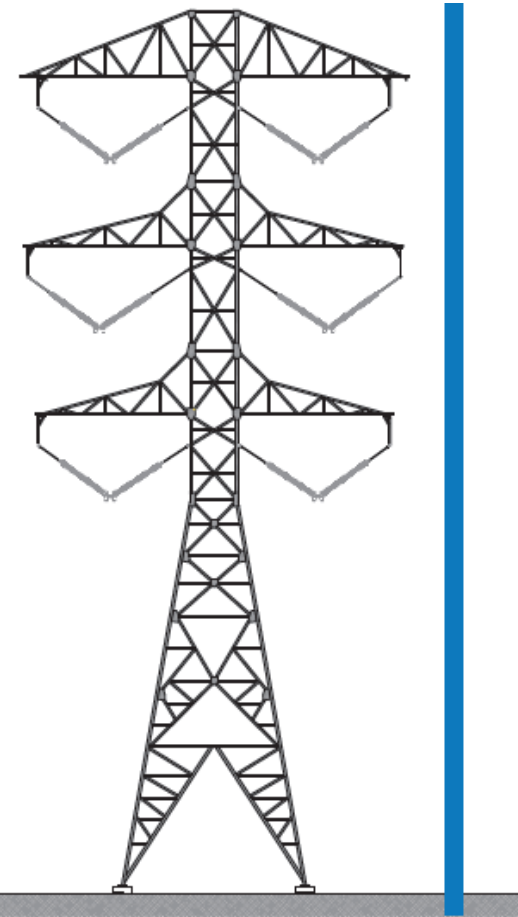


Preferred Design

Tubular Lattice Tower



Lattice Tower



Site-Specific Alternatives

Typical Preconstruction and Construction Activities



1 Initial surveying, right-of-way clearing and access routes



2 Structure staking, surveying and soils investigations as needed

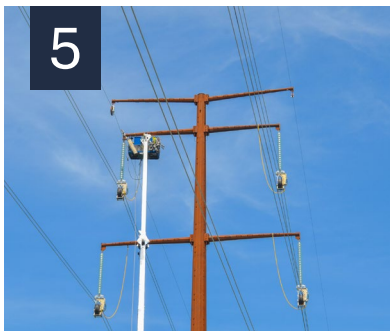


3 Foundation installation

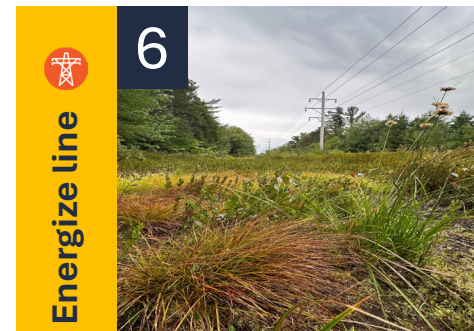
Foundation type may vary depending on structure



4 Assemble and set structures



5 Wire installation



6 Cleanup and restoration

Community Engagement



- Website launched in June 2025
- First round of open houses held in June 2025
- In-person and virtual engagement opportunities
- Second round of open houses held in October 2025
- Engagement through the Minnesota Public Utilities Commission permitting process

Communicating our path forward

Ongoing communication with stakeholders and landowners throughout all phases of the project.

Questions?



2025

SUMMARY OF HONOR RECIPIENTS AND ACTIVITIES SINCE 1914

A Century of Service in the
Agricultural Industry of
Northwestern Minnesota

The Historical Brief is Dedicated to...

- The pioneering spirit among the first ten counties who put together a regional effort to encourage the evolving agricultural industry and to communicate the needs of the region to the state and nation.
- The county commissioners who have supported the MRRVDA with annual appropriations since 1914.
- All Valley Farmers and Homemakers from northwest Minnesota who have been singularly honored by their peers for the quality of their caring and doing.
- The Builder of the Valley recipients who have so generously shared with others a life especially marked with creative responsibility.
- The couples of the King Agassiz and Emerging Leadership programs who have been among the youthful leaders personally investing time, effort, and leadership.
- The recipients of the Northwest Minnesota Youth Leadership Award who have already chosen to help where needed — even before they have completed their formal education.
- The University of Minnesota Extension for its vital role in the ongoing work of the Red River Valley Development Association.
- The present and former Board of Directors of the MRRVDA for their volunteer time to conduct the business of the Minnesota Red River Valley Development Association inc.

PREFACE

The Minnesota Red River Valley Development Association, Inc., (MRRVDA) has been on the scene in northwest Minnesota for 108 years.

This booklet provides a brief review of the early pioneering efforts along with a more detailed explanation and history of the current projects of the Association.

A list of people who have been singularly honored for their contributions to life in the region are organized by project:

1. The Valley Farmers and Homemakers, renamed the Outstanding Farm Leaders, who have been honored each year for the past 84 years.
2. The County King Agassizes selected by their peers in each of the counties as part of the King Agassiz Project.
3. The *Agassiz Leaders* are rural leaders in northwestern Minnesota who symbolize the future of northwest and west central Minnesota. *Agassiz Leaders* participate each year in the Emerging Leadership Program. In 2024, the Emerging Leaders program transitioned to **'Growing Local Leaders'** program.
4. The Builders of the Valley who have contributed their time and talents to improve the quality of life in northwest Minnesota.
5. The Northwest Minnesota Youth Leadership Award recipients who are demonstrating their outstanding citizenship, leadership, character building or contributions to live in northwest Minnesota.

ACKNOWLEDGMENTS

The directors wish to acknowledge the 108 years of generous professional expertise provided by the University of Minnesota Crookston and the University of Minnesota Extension. They provided the guidance, staffing, facilities, food service and overall planning of the annual banquet. Since 2020, the RRVDA directors have assumed responsibility of coordinating the various awards and presentation methods at individual county events.

HISTORICAL BRIEF

The Minnesota Red River Valley Development Association, Inc., (hereafter referred to as MRRVDA) was among the early efforts of citizen groups to encourage and develop the agricultural industry of northwest Minnesota. The Association began operations in 1914 and continues yet today. About 1914, northwest Minnesota was a region with few and very poor roads, an occasional automobile, few radios or telephones, no TV's, few magazines and newspapers reached farm homes, limited mail service and a shaky railroad service. All of this added to slow communication among those who farmed and those who served farmers.

A new branch of the University of Minnesota was being developed on a section of swampy land north of the town of Crookston, Polk County, Minnesota. An Agricultural Experiment Station was started in 1895, and a School of Agriculture was established in 1905. This research and teaching institution with its staff of trained professionals began to learn first-hand how to raise crops on the soggy sod of the region and then "extend" out to the farmers what had been learned. This was the first agricultural extension service in the region.

Rural people expressed great interest in the early outreach meetings for farmers provided by the University. There was even more interest by farm couples in the emerging idea called the "Short Course and Farm Crops Show" which the University launched in 1910. Educational meetings were initially held in the facilities on the campus. People came by train to attend the short course. The farm couples heard the experts, exchanged ideas, made new friends, and returned to their homes scattered over a ten-county area to put the information to good use.

Included in the entire region were only one or two county agents, no vocational agriculture teachers, and only two railroad "ag agents" as they were called. The availability of technical expertise for those engaged in farming was scarce.

The ten counties which formed a natural area around the location of this branch of the University looked for ways to be contributing partners to this "Farm crops show." There was an interest in developing a larger base of people to express their multi-county concerns to the State of Minnesota, other states, and the nation.

Accordingly, citizen leaders in the region, along with expertise at the University, established the MRRVDA.

The Articles of Incorporation under Minnesota law, were signed March 18, 1914, and included the counties of Kittson, Becker, Red Lake, Pennington, Mahanomen, Marshall, Norman, Roseau, Clay and Polk. The purpose was to encourage and assist the development of farming and promote the general welfare in these ten counties. The corporation was to be non-partisan, non-political, and engage in no business for

pecuniary profit. The government and management of affairs was vested in a board of directors, one director from each county and four members elected at-large by the county directors. C. G. Selvig, Superintendent of the University of Minnesota Northwest School and Experiment Station, was elected as one of the first at-large directors.

Article IV of the original corporate articles provided for individuals and businesses or public agencies to have memberships in the MRRVDA. The annual membership fee was set by the directors. The paid-up members from each county would caucus at the annual meeting and select their nominee for director. This system proved too erratic from the beginning. A major effort was made in the late 1920's to build a broad based membership in the ten counties. Despite the expertise of experienced organizers and expenditure of time and money, the membership idea died for want of broad citizen support by the mid-1930's. There seemed to be civic support, but the payment of membership fees just did not happen.

One of the very first relationships established by the MRRVDA already in 1914 was to secure an annual appropriation from the commissioners of each county. This practice was reasonably successful from the beginning and continues yet today. State legislation existing back to 1914 permitted county government to appropriate funds for ideas such as premiums for the "farm crops show" and related activities.

The nomination of directors for each county gradually moved to the purview of the county commissioners. This was in full practice by the time that the original Articles of Incorporation were updated in 1949 under the leadership of Tom McCall, Superintendent of the University of Minnesota Northwest School and Experiment Station and president of the MRRVDA. Four more counties were officially included in the new Articles: Clearwater, Lake of the Woods, Otter Tail, and Wilkin. The two large counties of Polk and Otter Tail were granted two directors each, one from the east and one from the west sectors. The time of continuing existence as a corporation for the MRRVDA was changed from "30 years" to "perpetual."

During the period from 1915 to 1935 the MRRVDA directors were quite active in common public concerns. Documented in the early minutes of MRRVDA, these issues addressed to agencies of government and to state and federal representatives included: control of barberry and Canadian thistle, soil conservation policies, the establishment of shelter belts on farms, more county and home agents, more vocational-agricultural teachers, improvement of water management, farm-to-market roads, new crops, livestock development, and the Northwest School and Experiment Station. The Red Lake River Conservancy District, one of the very earliest watershed management efforts in Minnesota, was a product of the MRRVDA discussions. Other agencies, farm organizations, cities, towns, and agri-businesses became more broadly involved in the common concerns in northwest Minnesota during the two or three decades following the 1920's. Accordingly, the MRRVDA began to move away from the broad complex of common public expressions to strengthening the cooperative relationships with the Red River Valley Winter Shows. In the late 1950's, under the leadership of Dr. Olaf C. Soine, Soil Scientist at the Northwest Experiment Station and president of the

MRRVDA, the directors moved to reorganize under the Minnesota Non-profit Corporation Act, Chapter 550, Laws of Minnesota - 1951. The incorporation as a non-profit group was completed January 11, 1961. The revised Articles of Incorporation placed emphasis on "assistance and encouragement to educational and developmental organizations -- particularly, the University of Minnesota Crookston and other educational efforts related to the agricultural industry." The revised by-laws called for 18 directors, 16 from the counties and two at-large directors. The initial at-large directors under the 1961 Articles of Incorporation were Dr. B. E. Youngquist, Superintendent, and Dr. Olaf Soine, Soil Scientist, elected from the staff at the University of Minnesota Crookston.

The reorganized MRRVDA continued to exert a quiet, regional influence for ongoing projects at the Winter Shows which had just completed new buildings on a 20-acre site adjoining the City of Crookston on the north. The board of directors moved to drop some of the out-of-date projects such as the rural spelling contest and stepped up efforts to support the idea of recognizing outstanding contributions of individuals living in each of the counties involved in the MRRVDA.

Moving on through the 1970's the reorganized MRRVDA made note of the number of civic, governmental, and agriculturally related organizations which had evolved in the Red River Basin since the early 1920's. It made sense for the MRRVDA to entirely drop the practice of considering and expressing views on broad issues in the northwest Minnesota region. This was being accomplished more effectively by several other groups and/or agencies. The board reviewed its time and effort with the Winter Shows and moved toward putting even more emphasis on the recognition of outstanding contributions by citizens living in the Red River Basin of Minnesota. There was a growing interest in the King Agassiz Project of the Winter Shows. Nearly all of the county kings selected since 1961 were continuing to live in northwest Minnesota. The county kings had formed the "County King Agassiz Association." This group requested professional assistance to provide leadership training which led to the "Emerging Leadership" project explained in detail in the project section.

The writer of this historical sketch has observed a number of agencies expend tax dollars during the past 45 years. No agency or group can claim more effective regional networking of your citizen leadership for as few tax dollars expended per county.

The directors serve as volunteers with no pay. Two meetings of the full board are held annually. The Executive and Project Committees of the board meet as needed to plan and develop the program details as established by the board. Board members volunteer to take on tasks during the year.

A total of about \$12,000 is appropriated annually by the 14 counties. The annual budget is set with a policy of not spending more money than is available. The board maintains a policy of "flexibility in program planning" to facilitate seed monies for innovative educational ideas which evolve in the ongoing scene of living in northwest Minnesota.

A listing of the current projects of MRRVDA for 2013-2014 follows: Valley Farmers & Homemakers Honor Banquet, County Youth Leadership Award, Builder of the Valley Project, Emerging Leadership Project, Northwest Minnesota Youth Award, Directors' Expenses, Office/Mail, Secretary/Bank, Contingency Fund.

The active projects of the MRRVDA are explained hereafter in some detail. The titles and beginning dates of each project are generally arranged in order of the earliest in the history of the MRRVDA to the most recent. Also included are the projects which were supported for a period of time and then dropped as the MRRVDA board adjusted their programs to the changing scene. These are identified with bold type and an asterisk *.

*** Crops Show - 1914**

Beginning in 1914 and up until very recently, checks were disbursed by the MRRVDA treasurer for the cash premiums, ribbons, plaques, judges and clerical costs of the Crops Show. Beginning in the late 1960's, the Winter Shows Crops Show Committee began to assume responsibility for funding the expenses. This kind of responsible attitude has made it possible for the MRRVDA Board to provide support for new educational opportunities arising at the grass-roots of the Red River Basin population.

*** Spelling Contest - 1918**

The county schools located in each county served a group of "walking distance" elementary students. These schools were at their height in numbers during the first 30 years of the Winter Shows. The MRRVDA responded to the request to host a regional spelling contest for all county schools in the ten-county region. The winner of the "spell down" contest went to the state contest sponsored by the Twin Cities newspapers. The MRRVDA provided funding for ribbons, clerical costs, and contributed toward the travel cost for the regional champion speller to attend the state contest. This was a very popular educational activity beginning in 1918 and continuing for about 40 years.

*** Summer Tours - 1923**

The MRRVDA was quite sensitive to matters of regional development and of cooperating where needed in the region to "get the story of this rich farming area" out beyond the Red River Basin. The early leadership of the MRRVDA struggled to inform themselves. The availability of rapid communication via radio, telephone, etc., was not there. Expertise was not readily available. So "what can we learn from each other?" must have been the idea. These summer tours generally took two to three days and at best the transportation system did not get the touring group very far. In short, an idea which lasted about a ten-year period and was dropped in the mid-1930's

Regional 4-H Activity - 1924

The University Agricultural Extension Service as it was called then grew rather quickly in northwest Minnesota during the 1920's. There was an almost immediate request for appropriate regional competition on the part of Extension 4-H leaders in the ten counties served by the Winter Shows. The public speaking contest began in the 1920's and continued on into the 1980's. The winner went to the State Fair competition. The MRRVDA board financed the rather modest expense for ribbons and plaques. There were many years in the 40's, 50's, and 60's when every county had a contestant.

Future Farmers of America Judging Contests - 1930

The development of a department of Vo-Ag in local high schools increased in number as better roads and school buses became available in the 1920's. The MRRVDA provided seed money during the early years for ribbons, plaques, and some clerical assistance as the individual high schools competed with each other in crop and livestock judging. This educational experience grew fast as crops and livestock experts of the Experiment Station provided leadership in setting up the contests with crops and weed identification as well as livestock judging of swine, sheep, beef, and dairy cattle. The Red River Valley Livestock Association provided more management and fiscal support in the late 1940's for the livestock contests which had grown to several hundred contestants. The judging contests, which greatly changed, are still part of Ag and Natural Resources Activities Day at UMN Crookston.

*** 4-H Tree Planting - 1932**

The Extension Service requested recognition of outstanding 4-H youth located in the ten counties who were participating in the planting of trees in various kinds of shelter belts about the countryside. The MRRVDA provided recognition ribbons and plaques for all 4-H youths who participated. A substantial cash award was given to the 4H-er who was judged as having successfully planted and nurtured the largest number of trees in appropriate settings. Many reports indicated numbers exceeding 5,000 trees provided to many 4-H youths by the Forestry Department and by the new Soil Conservation Service. One winner in the very late 1930's had a verified record of 80,000 trees planted on three farmsteads and in multiple row farm shelter belts located on a farm of just over 6,500 acres. This project was slowed down to a trickle during WWII, picked up a bit after the war, and was abandoned in the late 1940's as other agencies were active in the effort and doing a

Valley Farmers and Homemaker Honor Banquet 1938 – 2018 Outstanding Farm Leaders Banquet/Program 2019 – present

The directors of the MRRVDA searched for a way in the mid-1930's to recognize farm couples who were leaders in their community and thoughtful stewards of their possessions. Discussions went on over a period of three years. Tom McCall, Superintendent, Northwest Experiment Station, was president of the Association. At the annual meeting in 1937, the MRRVDA moved to recognize grass-roots citizens who, each in their own way, lived and worked so that indeed the quality of life was enhanced in northwest Minnesota.

The Honor Banquet has continued for 76 years and attracts a full-house audience annually. It is among the significant events of Northern Minnesota. Governors of Minnesota, Congressmen, Senators, and University presidents have addressed the occasion.

The typical program was two and one-half hours including the meal, musical selections, introductions of guests, special greetings, and individual awarding of engraved plaques. The banquets were held initially in banquet rooms of the old Crookston and Wayne Hotels. Banquet crowds grew in size. The banquet was moved to the Northwest School of Agriculture Dining Room, then to the largest church dining facilities in Crookston, and then to the modern Bede Ballroom at the University of Minnesota Crookston.

The selection of a couple in each county is accomplished by a committee representing farm-related organizations and the MRRVDA director. The extension director convenes the committee which makes the selection by about mid-January so plaque engraving and other plans can proceed.

Recognizing changes in family roles in farming, relevant agricultural business, or off-farm employment, the name was changed to "Outstanding Farm Leaders". The COVID-19 epidemic cancelled the banquet in 2020 and 2021; since then, a recognition event is held in each county under direction of the RRVDA director and county Extension staff.

***King Agassiz Project - 1961**

The Winter Shows moved from downtown Crookston to the present location in 1962. The Board of Managers was searching for a symbol of the Winter Shows annual event, especially one which reached back into the counties. While many people have contributed to the 33 year development of this idea, it was during those hectic years of rebuilding north of Crookston in 1961 that George Nornes, Vo-Ag instructor from Climax, Minnesota, and a committee of men and women appointed by the Winter Shows Board of Managers, originated the King Agassiz symbol.

The King Agassiz idea stood the test of time and certainly exceeded the dreams of those who launched and encouraged the project. New ideas need support money! The Winter Shows Board of Managers did not have money to support the idea. The MRRVDA agreed to pay for the expenses involved.

The earliest county kings were selected by ag industry leaders assisted by the county agent. This changed as the county kings organized to assume the annual selection with the reigning county king as chairperson of the selection committee as well as coordinator of the county coronation event which is usually held at the county fair. Too, the chairperson leads in modest fund raising in the county to support local project expenses.

The coronation ceremonies for King Agassiz of the Winter Shows extended over a two-day period including judging, luncheons, seminars, and the Coronation Banquet held at the University of Minnesota Crookston. This coronation was certainly among the top events at the Winter Shows.

A County King Agassiz Association was organized in the 1970's by former county kings. They proceeded to secure a directorship on the Board of Managers. The county kings requested professional expertise to develop a leadership seminar series for the county kings and their spouses as well as seed money to launch the idea. Details on that project are provided in the section on the "Red River Valley Emerging Leadership Program."

***Winter Shows Operations Project - 1963**

The Winter Shows Board of Managers sold the buildings in downtown Crookston in the early 1960's and built facilities on 25 acres of land bordering the city on the north. The MRRVDA moved to support the Winter Shows in their relocation effort by providing \$4,000 annually for operational expenses until the Winter Shows had an opportunity to build their operating income levels. None of the \$4,000 could be used for building construction. The grant did result in appropriate financing of the balance due on the building constructed in 1961-62 which was largely paid off by the time the North Arena was constructed in 1976. The annual grant of \$4,000 for operations expenses continued far longer than intended by the MRRVDA in 1963. The grant was reduced to \$2,000 annually in 1986 and discontinued entirely in 1990. The funds were transferred to the growing Emerging Leadership Project, the Builder of the Valley Award, the Northwest Minnesota Youth Award, and the Valley Farmer and Homemaker recognition project.

Builder of the Valley Award - 1982

The directors of the MRRVDA began discussions on another human resource recognition project in the late 1970's. Excerpts from the discussions recorded follow:

"There are individuals or families, who in their quiet, creative, energetic, far-seeing, and useful life, make an unusual contribution to northwest Minnesota! They do not seek notoriety! Accumulation of wealth may or may not be part of their accomplishments. They give more than they take! Can we find those who have really increased the quality of life in northwest Minnesota? The directors should find and screen the nominees! Let's appoint a standing committee to study suggested nominees and make a recommendation to the full board."

THE BUILDER OF THE VALLEY AWARD was then created by the MRRVDA in their desire to witness to the kind of human resources who improve the quality of life in northwest Minnesota. The award is intended to recognize grass-roots leadership and creativity. The recognition is generated by the efforts of the neighbors and friends of those who are recognized and who live in northwest Minnesota.

The award is considered to be among the area's top recognition honors and is given to those involved in production agriculture or related industry. The award will be given from time to time, not necessarily annually.

**Red River Valley Emerging Leadership Program – 1985-2024
Changed to**

“Growing Local Leadership” – 2024-25

Over the years, former County King Agassiz and their spouses discussed the potential benefits of forming a complementary program that would enable counties to continue working together, sharing knowledge and learn helpful leadership skills. A committee formed with representatives from the Winter Shows, the MRRVDA, the University of Minnesota Crookston and the University of Minnesota Extension. Key components included:

1. Requested the University of Minnesota Extension Service to develop a leadership training program for county “kings”.
2. The MRRVDA provided an initial grant of “seed money” for the first two years.
3. The county king couples would invest some of their own funds.
4. Additional funding was sought from foundations, farm organizations, the University and the Winter Shows.
5. The leadership training would include both the county king and spouse.
6. Each new class of county kings selected annually would be the group involved in the leadership training.

The program was an immediate success. The program included four training sessions held during late fall and winter. Participation has been near 100%. Extension personnel providing planning and production over the years initially included Barbara Muesing and Dr. Jared Smalley, and for the past decades, Jodi Horntvedt has provided the leadership. However over recent years, statistics have shown that there is a shortage of potential candidates in the 16 rural counties in the MRRVDA area to fill necessary positions on community boards, organizations, and volunteer groups. To address this, in 2024 the program began transitioning from the previous program to the “Growing Local Leadership” (GLL) format. The program continues to build personal confidence, enhance leadership skills, and strengthen regional connections. GLL learners explore how they can serve as change makers within their communities, including serving in and leading local boards and committees.

**Northwest Minnesota Youth
Leadership Award - 1989**

The Northwest Minnesota Youth Leadership Award was initiated to recognize a young adult in the 14 county area served by the Red River Valley Winter Shows, who has demonstrated outstanding ability in citizenship and leadership, character building or contributions to life in northwest Minnesota through their involvement in community, school or church youth organizations.

The objectives of the award are:

1. to recognize outstanding youth from northwest Minnesota.
2. to foster growth in leadership and community service.
3. to further educational development of youth in northwest Minnesota.
4. to recognize the potential of youth in northwest Minnesota.
5. to foster and encourage future growth and development toward continued improvement of life in northwest Minnesota.

Initially, applications were sought through the counselors and principals of area high schools and through the Minnesota Extension Service. The RRVDA directors reviewed the applications and selected the scholarship recipient. Beginning in 2022, the selection process is conducted by the University of Minnesota, Crookston scholarship program with RRVDA directors involved in the presentation each year.

County Youth Leadership Award

The County Youth Leadership Award is awarded in each county every year. The award is given by local 4-H leaders to the outstanding 4-H youth leader. The recipient is recognized at a county 4-H event and a cash award of \$200 is provided by the Association.

SUMMARY

The MRRVDA is a quiet, but substantially useful, organized effort in 14 northwest Minnesota counties. It is a legal, non-profit corporation under Minnesota Statutes. Throughout its 100 year history, the Association has been a grass-roots thrust encouraging and providing cooperative recognition and encouragement of the human resources in the Red River Basin.

The county commissioners from each of the 14 counties appropriate a modest sum of tax money to support the service of the MRRVDA. Further, the county commissioners nominate the director from their county who serves on the governing board of directors of the MRRVDA. The directors of the MRRVDA are a conscientious group who expend this annual appropriation with utmost care. They follow the policy of spending no more than the available funds. They monitor their ongoing projects constantly, eliminating the unneeded and providing seed money for new needs as funding permits

Dr. Bernie Youngquist, Professor Emeritus
University of Minnesota
Edited for use in 2014

THE FUTURE

As the Red River Valley Development Association enters a new century of service in Northwest Minnesota the Association reflects on the vast change that has taken place in the Red River Basin over the past 100 years. Unchanging, however, is the role of the Association in recognition and encouragement of the human resources of the region. The work of the Association continues by honoring, encouraging and assisting young people who plan a future in the Red River region. A second part of this work is encouraging, developing, and equipping new citizen leaders who are already strong contributors to our way of life. The work continues in recognizing and honoring those who have built the Red Rive Basin as we know it. Both those, whose lives reflect strongly on their families, their work and their community, as well as, those who have made major region wide contributions in their life's work. With strong support from the County Commissioners of the 14 county area, the University of Minnesota, the agricultural industry and citizen volunteers the work of the Red River Valley Development Association will continue.

We live in a region of vast and valuable natural resources, a land of untold beauty and promise. Chief among those resources is the human resource. This is the resource the Association wishes to recognize, develop and honor.

Bruce Hein, President

Carrie Smith
Becker County Administrator

January 2, 2026

The Red River Valley Development Association requests of Becker County the 2025 appropriation of \$900.00.

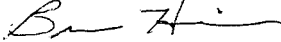
We appreciate the support of Becker County in Development Board efforts to support Northwest MN programing including:

Outstanding Farm Leaders, Youth Leadership Awards (UMC and M State), County 4-H & FFA Leadership Awards, Rural Leadership Programs and Builder of the Valley Project.

Please contact me if you have any questions.

Thank you,

Bruce Hein, President



Please send payment to:

Red River Valley Development Association

Russell Miller, Treasurer

24567 370th Ave. NW

Warren, MN 56762

BECKER COUNTY BOARD OF COMMISSIONERS

RESOLUTION 01-26-1F

Minimum Salary Setting for Elected Officials

WHEREAS, Minnesota Statutes require the County Board to set, by Resolution, the minimum salary to be paid to certain elected officials; and

WHEREAS, The Board is to take such action at the January meeting prior to the first date on which applicants may file for the office; and

WHEREAS, 2026 is an election year, the law requires the Board to set the minimum salaries for these positions at the January 2026 meeting. The law applies to the Offices of Auditor-Treasurer, Sheriff, and County Attorney; and

THEREFORE, BE IT RESOLVED, the minimum salaries for the following elected offices shall be set:

Auditor-Treasurer	\$80,000
Sheriff	\$90,000
County Attorney	\$100,000

Duly adopted this 6th day of January, 2026, at Detroit Lakes, Minnesota.

COUNTY BOARD OF COMMISSIONERS
Becker County, Minnesota

ATTEST:

/s/ Carrie Smith
Carrie Smith
County Administrator

/s
Board Chair

State of Minnesota)
)ss
County of Becker)

I, the undersigned being the duly appointed and qualified County Administrator for the County of Becker, State of Minnesota, do hereby certify that the foregoing is a true and correct copy of a Resolution passed, adopted, and approved by the County Board of Commissioners at a meeting held January 6, 2026 as recorded in the record of proceedings.

Carrie Smith
County Administrator



BECKER COUNTY

915 Lake Avenue • Detroit Lakes, MN 56501
218-846-7311

MEMORANDUM FOR ACTION

Date: January 6, 2026

SUBJECT: Approve Shelter Renovations Estimate/Authorize Construction

TO: Becker County Board of Commissioners

1. Discussion: NRM committee reviewed two estimates for the old VFW shelter to be renovated in 2026 at Dunton Locks County Park. Work to be completed varies from interior/exterior siding installation, ceiling removal, floor grinding, and window installations (see attached estimate for more details). Material cost is included in estimate.
2. Funding: Recreation Fund
3. Action request: Approve low estimate from AAA Construction of Minnesota, Inc. of \$16,310.00.
4. The point of contact for this memorandum is Mitch Lundeen/Steve Skoog

Distribution: Board of Commissioners, County Administrator

AAA Construction of Minnesota, Inc.

Detroit Lakes, MN 56502

Lic. # BC122003

P.O. Box 1848

Estimate

Date	Estimate #
12/9/2025	301

Name / Address
Mitch Lundeen Land Commissioner Natural Resources Management 1771 North Tower Road Detroit Lakes, MN 56501

Spring - Material
26' included
10 days
to complete

Terms	
Open P/O	
Description	Total
Renovation of existing picnic shelter as follows: <ul style="list-style-type: none">- Install five 46.5" X 19.75" vinyl windows (1 on each side and three along back wall)- Remove 6 feet of wall on east and west sides- Remove plywood ceiling, insulation and mechanical chase<ul style="list-style-type: none">- Patch roof at mechanical chase opening- Paint exposed underside of roof deck and rafters black- Grind residual tile and grout on floor to smooth texture- Re-side north, east and west sides with LP Smartside*- Re-side Gable end with LP Smartside Shake Lap siding*<ul style="list-style-type: none">*color to match existing venue building	16,310.00
Thank you for considering this estimate. We look forward to working with you.	Total \$16,310.00

Here is estimate, I did not include anything to do with ceiling. If that is something you want done we definitely can add that to the project. You had mentioned that the vfw would like to help. Maybe that is something they can do.

Thanks

Brent Haldorson



Dutton locks Shelter
Becker County
12-10-25
Estimate

Labor

Frame in 5 new window openings
Install windows
Install soffit and fascia
Install horizontal siding on walls and vertical on gable ends
Lp smart siding in brown with clay color windows
Install plywood on interior walls

11,950.00

Material from Stenerson's Lumber

Framing material
Windows
Siding, soffit and fascia

11,728.00

Garbage fee

150.00

Total 23,828.00

Please understand that this is an estimate and is to our best knowledge what items will cost. There will be ups and downs on material . We will do our best at keeping everything on time and on schedule. All change orders will be handled with a 250.00 charge and 75.00 per hr.

Brent Haldorson
License # BC733845
brhdetroitlakes@yahoo.com
218.841.1601



BECKER COUNTY

915 Lake Avenue • Detroit Lakes, MN 56501

218-846-7311

MEMORANDUM FOR ACTION

Date: January 6th, 2026

SUBJECT: Approve Capital Expenditure Request – Tractor, Loader, Boom Mower.

TO: Becker County Board of Commissioners

1. Discussion: Becker County has over 50 miles of designated county forest roads to maintain on a regular basis. The Natural Resources Management Department feels it necessary to purchase a tractor and boom mower to consistently maintain these roads and trails. The tractor will also be used to maintain the Becker County Transfer Station Complex. Tractor and attachments could also be used by other departments upon requests.
2. Funding: Combination of Tax Forfeited Fund, Resource Development Fund (majority), and Environmental Services (least).
3. Action request: Approve the Becker County Land Commissioner to purchase a tractor, loader, and boom mower up to \$240,000.
4. The point of contact for this memorandum is Mitch Lundeen/Steve Skoog

Distribution: County Administrator

**Quote # 1408968**

Exp. 14-Jan-2026

Balance Due
\$232,375.08**Prepared For**

BECKER COUNTY ENVIRONMENTAL

PO BOX 787
DETROIT LAKES, MN 565020787**Prepared By**Grant Connelly
110 Michael Street S
Hawley, MN 56549

Description	Qty	Price
6M 130 Cab Tractor	1	\$179,489.20
Attachments - Diamond Boom Mower	1	\$37,030.00
640R Standard Farm Loader	1	\$15,855.88
SubTotal		\$232,375.08
Total Selling Price		\$232,375.08
Total Tax		\$0.00
Sub Total		\$232,375.08
Balance Due		\$232,375.08

Selected Contract:

Sourcewell Ag 082923-DAC (PG BA CG 76)

Sourcewell Account # 8609

Please review the John Deere privacy policy at <https://www.deere.com/en/privacy-and-data>



Configurations

6M 130 Cab Tractor		QTY 1	Extended Selling Price	
			\$179,489.20	
Base / Options			Unit Selling Price	\$179,489.20
United States	1		Sway Control Blocks	1
English	1		Rear PTO - 540/1000 rpm	1
Shipping Preparation with conservation	1		Hydraulic Pump - 114 l/min	1
AutoPowr™ Infinitely Variable Transmission (IVT™) - 40 km/h (25mph)	1		4 Electronic SCVs (450 Series)	1
Premium Cab Package	1		No Midstack SCV	1
Compact CommandARM™	1		ISOBUS Ready / GreenStar™ Ready	1
Mechanical Cab Suspension	1		Less Application	1
Premium Seat	1		JDLINK™ Modem – not MachineSync capable	1
Mirrors - Manual Telescopic	1		E-SCV 2F (Electrical Valve, 2 Functions), Mounting Frames	1
Premium Radio	1		Less Loader Equipment	1
Flange-Type Rear Axle	1		Less Loader Boom	1
4WD Front Axle - TLS with Brakes	1		Cold Start Package II	1
Adjustable Steel Wheels	1		Fuel Tank Bottom Guard	1
Adjustable Steel Wheels	1		Rear Fender Extensions - Adjusted to Tire Size	1
Rear and Front Tire Brand - No preference	1		Dual Beacon Lights	1
Rear Wheel Size 420/85R38 (16.9R - 38)	1		Beltline Worklights - LED	1
Front Wheel Size 380/85R24 (14.9R24)	1		Battery 12 V/174 Ah	1
Center Link with Ball End - Category 2	1		Alternator 14 V/250 A	1
Draft Links with Hook End - Category 2	1		Multi-Power Outlet Strip	1
Technology Options			Unit Selling Price	\$0.00
Less Display	1	\$0.00	Less Receiver	1 \$0.00
Dealer Attachments			Unit Selling Price	\$37,030.00
Diamond Mower	1	\$37,030.00		Unit Qty

Extended Selling Price



640R Standard Farm Loader		QTY 1		\$15,855.88
Base / Options			Unit Selling Price	\$15,855.88
United States	1	Less Hydraulic Hoses and Controls	1	
English	1	Three-Function Single-Point Hydraulic Connection	1	
6R/6M Small-Frame and 6X30/Premium Field Installed Loader	1	Less Hood Guard	1	
Less Mounting Frames	1	Less Ballast Box	1	
640R Mechanical Self-Leveling (MSL) Farm Loader Three-Function	1	2450-mm (96-in.) Global Heavy-Duty Bucket with Grapple Brackets	1	

RAISING THE BOOM.



TR 3-POINT BOOM MOWER

Diamond's 3-Point Booms Mowers are built to clean overgrowth from fence lines, cut back overgrown trees, handle CRP and terraces, ditches, waterways and more.

3-Point Boom Mowers mount on tractors with ease and dismount just as easily. Diamond uses premium cast steel pumps and motors in a fully self-contained hydraulic system, which prevents any cross contamination between the mower and tractor.



SPECIFICATIONS



AVAILABLE BOOM LENGTHS 16' | 17' | 20'



ROTARY 2,506 LBS | 3,095 LBS | 3,145 LBS



FLAIL 2,589 LBS | 3,260 LBS | 3,314 LBS

IDEAL APPLICATIONS



ROADSIDE MAINTENANCE



DITCH & FENCE LINE CLEARING



RIGHT-OF-WAY MANAGEMENT



3-POINT BOOM MOWER - ROTARY & FLAIL

Both our rotary and flail heads are champions in their fields. Which one wins for you just depends on your working environment, your needs, and your ultimate goal.

- **Rotary Mower** - Overall faster cut for brush and small tree work. Leaves a rougher cut in grass.
- **Flail Mower** - Provides a much more manicured and clean cut. Its higher quality cut will require a slower tractor speed.



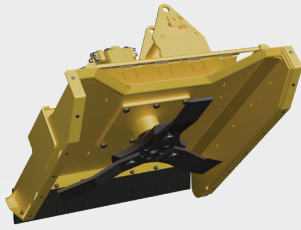
GEN 3 JOYSTICK

Enhanced control and comfort

- **Improved Ergonomics** - Improved ergonomics make operation more comfortable and enjoyable.
- **Fast Response** - Increased mowing speed in tough terrain because of shorter operator reaction time.
- **Ease of Use** - Ease of use decreases operator fatigue, ensuring longer operation periods.

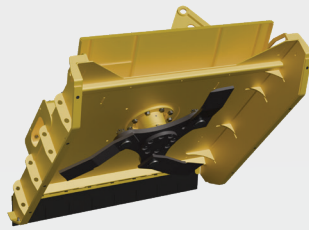
3-PT BOOM CUTTING HEADS

VERSATILE CUTTING SOLUTIONS



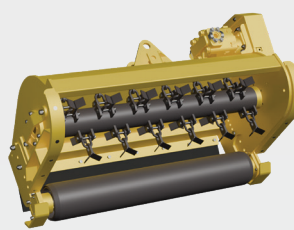
TR ROTARY 3-POINT MOWER

- 40" cut width
- Cuts brush and trees up to 4" in diameter
- Compatible Boom: 16'
- Standard proprietary Tri-Hex **5 YEAR WARRANTY**
- » Optional Blade Carrier



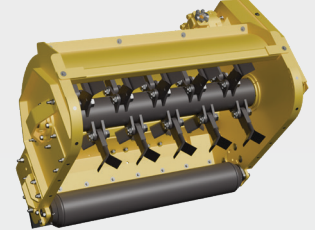
TR ROTARY 3-POINT MOWER

- 50" cut width
- Cuts brush and trees up to 8" in diameter
- Compatible Boom: 17' | 20'
- Standard proprietary Tri-Hex **5 YEAR WARRANTY**
- » Optional Blade Carrier



TR FLAIL 3-POINT MOWER

- 42" cut width
- Cuts brush and trees up to 2" in diameter
- Compatible Boom: 16'
- Flail knives less likely to propel object

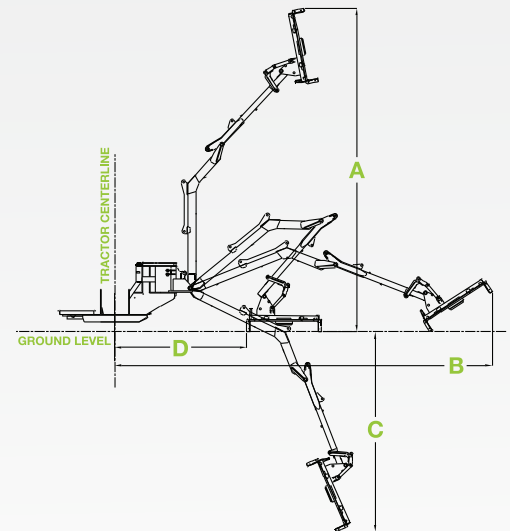


TR FLAIL 3-POINT MOWER

- 44" cut width
- Cuts brush and trees up to 6" in diameter
- Compatible Boom: 17' | 20'
- Flail knives less likely to propel object

SPECIFIC SPECIFICATIONS & BOOM REACH

	16' STD	17' HD	20' HD
HITCH	CAT II OR III	CAT II OR III	CAT II OR III
PTO RPM	540	1,000	1,000
PTO HP	60	90	90
MINIMUM TRACTOR WEIGHT	6,000 LBS	10,500 LBS	11,500 LBS
ATTACHMENTS	40" Rotary OR 42" Flail	50" Rotary OR 44" Flail	50" Rotary OR 44" Flail
WEIGHT WITH ROTARY MOWER	2,506 LBS	3,095 LBS	3,145 LBS
WEIGHT WITH FLAIL MOWER	2,589 LBS	3,260 LBS	3,314 LBS
BOOM REACH DIMENSION "A"	15' 7"	17' 6"	19' 7"
BOOM REACH DIMENSION "B"	16' 1"	17' 9"	19' 10"
BOOM REACH DIMENSION "C"	5' 2"	5' 8"	6' 5"
BOOM REACH DIMENSION "D"	2' 7"	3' 2"	3' 2"



Optional Features:

- T-Bar Bracket - Improved stability for your attachment. 17' & 20' models only
- Hydraulic Oil Cooler - Keeps the hydraulic oil temperature cooler during long continuous operation and hot climates.



***MINIMUM 3/4" THICK POLYCARBONATE OPERATOR PROTECTION REQUIRED.**
SOME APPLICATIONS MAY REQUIRE ADDITIONAL PROTECTION.

LEARN MORE



TR-3PT-BOOM-ATTACHMENTS
R2-V4-10/09/24

CONTACT US



email hello@diamondmowers.com



web diamondmowers.com



main office 605.977.3300
Page 63 of 88

Capital Improvement Expenditure Request Form



Date Requested: 1/5/2026

Department: Land Use/Environmental Services

Department Head: Steve Skoog

EXPLANATION OF THE REQUEST

Purpose/Need: Purchase a new refuse transfer trailer

REQUEST AMOUNT: \$ 119,425

Savings Achieved (Dollar Amount/Time/ Efficiency): Currently the department uses five walking floor trailers throughout the year to transfer refuse and recyclables. There is a need to purchase another trailer because during the busy summer months (April – September) staff does not have enough trailer transfer capacity at times to hold the volume coming to the County Solid Waste Campus.

Are There Sufficient Funds In Your Budget?

Yes ☒ No ☐

Is this included in your department's 5-Year Capital Improvement Plan?

Yes ☒ No ☐

Please explain further, if necessary: Staff received quotes for aluminum and steel body trailers from three vendors. The price quotes were reviewed by the Environmental Services Committee, and the recommendation is to purchase a 52' MAC aluminum body walking floor trailer from North American Trailer Sales.

Action Taken (*If different than request*): Board motion approving a new MAC walking floor refuse trailer from North American Trailer Sales, LTD for the amount of \$119,425.00

Date Request Completed: 12/30/2025

* This form must be completed and sent to the County Administrator for any request of Capital Improvement Purchase.



I-29 TRAILER SALES
3701 38TH STREET SW
FARGO, ND 58104
Phone: (701) 281-9755
Website: WWW.I29TRAILERSALES.COM

Becker County
John.Hockett@co.becker.mn.us

Due to Tariffs, Trailer pricing is subject to change at Manufacturer discretion and delivered unit pricing will be finalized 90 days prior to start of production

MOVINGFLOOR MVP SS			Quote ID # 139049		JOB #	Rev 2
Customer I-29 TRAILER SALES				Balance Due	\$122,000.00	
Dealer Name I-29 TRAILER SALES				Cubic Yards	128	
Quote Date 12/10/25	Quote Expires 1/10/26	Otv 1	Weight		18909 lbs. ***	
Mfg Salesman Trever		Model Code DI	Plant of Mfg W			
Cust P.O. #		Cust Unit #				
Dlr Sls Rep		Sls Rep Email				

BODY

LOAD PROFILE	MATERIAL, 80K GVWR
LENGTH	52
WIDTH	102
DRIVE UNIT	KEITH, 25 SLAT 3 IN. CYLINDERS
FLOOR	KEITH 2299 (2218), 1/2 IN. TRIPLE RIDGE (102 W)
HYDRAULIC PIPE	STAINLESS STEEL HYDRAULIC PIPE
CROSSMEMBER TYPE	STANDARD
CROSSMEMBER SPACING	5-1/4 IN. I-BEAMS, 14 O.C.
RUBBER SEAL	YES
WALL HEIGHT	100
TAPERED SIDES	NONE
WALL LINER	NONE
FULL LID	NONE
TOP RAIL OPTION	HEAVY 2-1/4 IN. VERT. PANEL TOP RAIL
HEAVY 2-1/4 IN. VERT. PANEL TOP RAIL	
TOP RAIL OVERLAY CAP	NONE
TARP BAR	NONE
BULKHEAD	3/16 IN.
BULKHEAD STEPS	CATWALK & LADDER W/ STEPS INSIDE
FRONT FENDERS WITH FLAPS	NONE
TAPER SIDE FENDERWELLS	NONE
POCKET TYPE	2-1/4IN STANDARD POCKETS
BOTTOM RAIL	SQUARE, NO CLEAN OUT
UPPER CROSS TUBES / CAPS	(1) SPRING-MID & (1) TUBE-REAR
TIRE CARRIER	NONE
SIDES	2-1/4 X 15-1/2 HEAVY VERT. PANELS - (BUFFED)

LIGHTS

LIGHT TYPE	GROTE L.E.D. W/ GROMMET
LIGHT PANEL	3 LARGE-3 SMALL-3 LARGE (IN TAILGATE) OOO ooo OOO
APRON	NONE
STD. MARKER LIGHTS	(3) EACH SIDE
MID-TURNS	(1) PAIR L.E.D. (NON-COMBO)
BACK-UP LIGHTS	NONE
AUXILIARY CABLE	NONE
REAR POCKET LIGHTS	1 PAIR

GATE

GATE SHEET THICKNESS	SMOOTH SIDE PANELS
GATE OPERATION	MECHANICAL SIDE LATCH
HINGE TYPE	C.S. SIDE SWING
GATE BRACING	NO BRACING (SMOOTH SIDE PANELS)
SAFETY CHAIN	YES
WINDERS / SAFETY LATCH	WINDERS (1) SIDE ONLY
GATE STEPS	UP CENTER OF GATE OUTSIDE ONLY
TARP HOOKS	BULKHEAD AND GATE

PRIMARY AXLES

MODEL	CLOSED TANDEM
NO. OF PRIMARY AXLES	2
SUSPENSION	MAC FABBED GALVANIZED SINGLE LEAF TAN. (49)
AXLE SPACING	49
SUB-FRAME	TANDEM (ALUM. T-BEAM)
AXLES	77.5 IN., HEND. 5/8 IN. WALL TP W/ 25K
BRAKES	7 IN. XL, W/ 30-30 CHAMBERS
CAM GUARDS	NONE
HUB AND DRUM	CAST W/ STEEL HUB HP 10 STUD TP, LS, 7 IN.
TIRES	GENERAL RA 11 R 22.5 16 PLY
WHEELS	STEEL HP 22.5X8.25 - WHITE POWDER COATED
PRIMARY AXLE TIRE INFLATION SYSTEM	MOVED TO CHASSIS

LIFT AXLES

NO. OF LIFT AXLES	0
LIFT AXLE SUSPENSION	NONE
LIFT KIT	NONE
LIFT AXLE DISTANCE	N/A
LIFT AXLE	NONE
LIFT AXLE BRAKES	NONE
LIFT AXLE CAM GUARDS	NONE
LIFT AXLE HUB AND DRUM	NONE
LIFT AXLE TIRES	NONE
LIFT AXLE WHEELS	NONE
LIFT AXLE CONTROLS	NONE
FREE WHEEL VALVE	NONE
LIFT AXLE TIRE INFLATION SYSTEM	MOVED TO CHASSIS

STEERABLE LIFT AXLES

NO. OF STEERABLE AXLES	0
STEERABLE AXLE SUSPENSION	NONE
STEERABLE AXLE DISTANCE	N/A
STEERABLE AXLES	NONE
STEERABLE AXLE BRAKES	NONE
STEERABLE AXLE HUB AND DRUMS	NONE
STEERABLE AXLE TIRES	NONE
STEERABLE AXLE WHEELS	NONE
STEERABLE AXLE CONTROLS	NONE
STEERABLE AXLE LIFT KIT	NONE

CHASSIS

PIN SETTING	36
5TH WHEEL PLATE	3/8 LOW PROFILE
5TH WHEEL PLATE HEIGHT	49 IN. HIGH
GALVANIZED SUSPENSION HANGERS	INCLUDED W/ SUSPENSION
SUSPENSION CONTROL	NONE
ABS FOR TRAILER	(1) 2S1M MERITOR / WABCO
SLACKS	AUTOMATIC
TIRE INFLATION SYSTEM	NONE
AXLE LUBRICATION	HXL, SYNTHETIC SEMI-FLUID GREASE
HUBODOMETER	NONE
DUST COVERS	NONE

DOLLIES - LANDING GEAR - LANDING LEGS	JOST H451 - (62,500 LB.) - 10 YEAR NO LUBE - GALVANIZED STEEL - D.S.
REGISTRATION HOLDER	NONE
AIR GAUGE / SYSTEM	YES, IN FRONT
ENCLOSURE FOR SWITCHES	NONE
AIR TANKS	ALUMINUM TANK
HYDRAULIC HOSE FITTING	1 IN. X 108 IN. HOSE W/ WING FITTING
FLAPS FRONT OF TIRES	NONE
FLAPS REAR OF TIRES	FLAP BEHIND REAR AXLE
BUMPER	D.O.T. BUMPER

TARP

TARP MANUFACTURER AERO CLASSIC SIDE TO SIDE - MESH

Wants crank handle on Front of trailer to crank from front instead of rear.

TARP CONTROL MANUAL
TARP COLOR BLACK
BOW HOLDERS STANDARD
TARP BRACKET NONE

PAINT

SUSPENSION COLOR BLACK SOFT COAT
PIN STRIPING BLACK (931716)
MAC MACHINE FINISH LOGOS BLACK (931716)
OPTIONAL SIGNS NONE

Due to Tarriffs, delivered unit pricing will be finalized 90 days prior to start of production.

Quote # 139049
Job #

Pricing is in U.S. Currency

UNIT PRICE	\$106,250.00
FET	\$12,750.00
Sales Tax	\$0.00
SUB TOTAL	\$119,000.00
Freight	\$3,000.00
	\$122,000.00
Trade In Allowance	\$0.00
Down Payment	\$0.00
BALANCE DUE	\$122,000.00

Thank you for your business

ORDER CANCELLATION POLICY

Orders configured with common published and non-published options will not be subject to a cancellation penalty when the Manufacturer receives the request for cancellation 12 or more weeks prior to the scheduled production date. All cancellation requests received within 12 weeks but no less than 8 weeks of the scheduled production start date must be approved by the Product Manager for the specified product line and will be subject to a \$2500.00 cancellation fee. Cancellation requests within 8 weeks of the scheduled production start date will not be accepted.

*** denotes a weight for reference only. Trailer weight will be provided with the engineering design approval packet.



NORTH AMERICAN TRAILER SALES, LTD

11015 CLARK RD
 INVER GROVE HEIGHTS, MN 55077
 Phone: (651) 450-9109
 Website: www.north-american-trailer.com

Due to Tariffs, Trailer pricing is subject to change at Manufacturer discretion and delivered unit pricing will be finalized 90 days prior to start of production

MOVINGFLOOR MVP SS			Quote ID # 139046		JOB #	Rev 1
Customer NORTH AMERICAN TRAILER SALES, LTD			\$ 119,425.00			
Dealer Name NORTH AMERICAN TRAILER SALES, LTD			Cubic Yards		133	
Quote Date 12/10/25	Quote Expires 1/10/26	Otv 1	Weight		21338 lbs. ***	
Mfg Salesman COREY WHITE			Model Code DI		Plant of Mfg W	
Cust P.O. # BECKER COUNTY			Cust Unit #			
Dlr Sls Rep			Sls Rep Email			

BODY	
LOAD PROFILE	MATERIAL, 90K GVWR
LENGTH	52
	Minnesota Legal
WIDTH	102
DRIVE UNIT	KEITH, 25 SLAT 3-1/2 IN. CYLINDER (HEAVY DUTY)
FLOOR	KEITH 2301 (1841), 3/4 IN. TRIPLE RIDGE (102 W)
HYDRAULIC PIPE	STAINLESS STEEL HYDRAULIC PIPE
CROSSMEMBER TYPE	HEAVY-FULL TRAILER LENGTH 14 IN. C/M SPACING
CROSSMEMBER SPACING	5-1/4 IN. I-BEAMS, 14 O.C.
RUBBER SEAL	YES
WALL HEIGHT	104
TAPERED SIDES	NONE
WALL LINER	3/16 LAST 10 FT.
FULL LID	NONE
TOP RAIL OPTION	HEAVY 2-1/4 IN. VERT. PANEL TOP RAIL
	HEAVY 2-1/4 IN. VERT. PANEL TOP RAIL
TOP RAIL OVERLAY CAP	NONE
TARP BAR	NONE
BULKHEAD	3/16 IN.
BULKHEAD STEPS	CATWALK & LADDER W/ STEPS INSIDE
FRONT FENDERS WITH FLAPS	NONE
TAPER SIDE FENDERWELLS	NONE
POCKET TYPE	2-1/4IN STANDARD POCKETS
BOTTOM RAIL	SQUARE, NO CLEAN OUT
UPPER CROSS TUBES / CAPS	(1) SPRING-MID & (1) TUBE-REAR
TIRE CARRIER	NONE
SIDES	2-1/4 X 15-1/2 HEAVY VERT. PANELS - (BUFFED)
LIGHTS	
LIGHT TYPE	GROTE L.E.D. W/ GROMMET
LIGHT PANEL	3 LARGE-3 SMALL-3 LARGE (IN TAILGATE) 000 000 000
APRON	NONE
STD. MARKER LIGHTS	(3) EACH SIDE
MID-TURNS	(1) PAIR L.E.D. (NON-COMBO)
BACK-UP LIGHTS	NONE
AUXILIARY CABLE	NONE
REAR POCKET LIGHTS	1 PAIR

GATE	
GATE SHEET THICKNESS	SMOOTH SIDE PANELS
GATE OPERATION	MECHANICAL SIDE LATCH
HINGE TYPE	C.S. SIDE SWING
GATE BRACING	NO BRACING (SMOOTH SIDE PANELS)
SAFETY CHAIN	YES
WINDERS / SAFETY LATCH	WINDERS (1) SIDE ONLY
GATE STEPS	UP CENTER OF GATE OUTSIDE ONLY
TARP HOOKS	BULKHEAD AND GATE

PRIMARY AXLES	
MODEL	CLOSED TANDEM
	43' KP to CL of rear axle group.
NO. OF PRIMARY AXLES	2
SUSPENSION	MAC FABBED GALVANIZED 3 LEAF TAN. (49)
AXLE SPACING	49
SUB-FRAME	TANDEM (ALUM. T-BEAM)
AXLES	TP 77.5 5/8W 7" 25K
BRAKES	7 IN. XL, W/ 30-30 CHAMBERS
CAM GUARDS	NONE
HUB AND DRUM	CAST W/ STEEL HUB HP 10 STUD TP, LS, 7 IN.
TIRES	GENERAL RA 11 R 22.5 16 PLY
	295 Goodyear Duraseal
WHEELS	STEEL HP 22.5X8.25 - WHITE POWDER COATED
PRIMARY AXLE TIRE INFLATION SYSTEM	MOVED TO CHASSIS

LIFT AXLES	
NO. OF LIFT AXLES	0
LIFT AXLE SUSPENSION	NONE
LIFT KIT	NONE
LIFT AXLE DISTANCE	N/A
LIFT AXLE	NONE
LIFT AXLE BRAKES	NONE
LIFT AXLE CAM GUARDS	NONE
LIFT AXLE HUB AND DRUM	NONE
LIFT AXLE TIRES	NONE
LIFT AXLE WHEELS	NONE
LIFT AXLE CONTROLS	NONE
FREE WHEEL VALVE	NONE
LIFT AXLE TIRE INFLATION SYSTEM	MOVED TO CHASSIS

STEERABLE LIFT AXLES	
NO. OF STEERABLE AXLES	0
STEERABLE AXLE SUSPENSION	NONE
STEERABLE AXLE DISTANCE	N/A
STEERABLE AXLES	NONE
STEERABLE AXLE BRAKES	NONE
STEERABLE AXLE HUB AND DRUMS	NONE
STEERABLE AXLE TIRES	NONE
STEERABLE AXLE WHEELS	NONE
STEERABLE AXLE CONTROLS	NONE
STEERABLE AXLE LIFT KIT	NONE

CHASSIS	
PIN SETTING	36
5TH WHEEL PLATE	3/8 LOW PROFILE
5TH WHEEL PLATE HEIGHT	49 IN. HIGH
GALVANIZED SUSPENSION HANGERS	INCLUDED W/ SUSPENSION
SUSPENSION CONTROL	NONE
ABS FOR TRAILER	(1) 2S1M MERITOR / WABCO
SLACKS	AUTOMATIC

TIRE INFLATION SYSTEM	NONE
AXLE LUBRICATION	SYNTHETIC GREASE
HUBODOMETER	NONE
DUST COVERS	NONE
DOLLIES - LANDING GEAR - LANDING LEGS	JOST H451 - (62,500 LB.) - 10 YEAR NO LUBE - GALVANIZED STEEL - D.S.
REGISTRATION HOLDER	BETTS PS-1 W/ SIGHT GLASS (ROUND HOLDER)
AIR GAUGE / SYSTEM	NONE
ENCLOSURE FOR SWITCHES	NONE
AIR TANKS	ALUMINUM TANK
HYDRAULIC HOSE FITTING	1 IN. X 108 IN. HOSE W/ WING FITTING
FLAPS FRONT OF TIRES	NONE
FLAPS REAR OF TIRES	FLAP BEHIND REAR AXLE
BUMPER	D.O.T. BUMPER

TARP

TARP MANUFACTURER	AERO CLASSIC SIDE TO SIDE - MESH
	mount ratchet straps directly to trailer
TARP CONTROL	MANUAL
TARP COLOR	BLACK
BOW HOLDERS	STANDARD
TARP BRACKET	NONE

PAINT

SUSPENSION COLOR	BLACK SOFT COAT
PIN STRIPING	BLACK (931716)
MAC MACHINE FINISH LOGOS	BLACK (931716)
OPTIONAL SIGNS	NONE

Thank you for your business

ORDER CANCELLATION POLICY

Orders configured with common published and non-published options will not be subject to a cancellation penalty when the Manufacturer receives the request for cancellation 12 or more weeks prior to the scheduled production date. All cancellation requests received within 12 weeks but no less than 8 weeks of the scheduled production start date must be approved by the Product Manager for the specified product line and will be subject to a \$2500.00 cancellation fee. Cancellation requests within 8 weeks of the scheduled production start date will not be accepted.

*** denotes a weight for reference only. Trailer weight will be provided with the engineering design approval packet.



WALKING FLOOR® Trailers

Morris, Minnesota

**SPECIFICATION & QUOTE FOR
BECKER COUNTY / JOHN HOCKETT**

Date: 12/11/25

DOUG STORCK

TELEPHONE: 800-833-6045

FAX: 320-589-1974

dougs@wilkens-ind.com

DELIVERY DATE:

1-2 weeks

QUANTITY	(1) - ONE IN STOCK VIN #260	
MODEL	2025 - WILKENS ALUMINUM OPEN TOP WALKING FLOOR TRANSFER TRAILER #50125AOT	\$112,441.00
CUBIC YARDS	125	
A LENGTH (OUTSIDE)	50'	
B HEIGHT (OUTSIDE)	13' 4"	
C-D OUTSIDE WIDTH	98" (FRONT) / 102" (REAR)	
E INSIDE LENGTH	49'9"	
F-G INSIDE HEIGHT	104" (FRONT) / 104" (REAR)	
H-I INSIDE WIDTH	92" (FRONT) / 96" (REAR) 2" TAPER BODY	
J SIDES	.160 ALUMINUM 5052H32 DOUBLE LAP SHEETS HUCK BOLTED TO 6061T6 SIDE POSTS 13.63" O/C	
K TOP RAIL	WILKENS HEAVY DUTY 4" x 6" x .375" ALUMINUM RAIL, NO SEAMS	
L SPREADER BAR	3" x 3" x 1/4" STEEL TUBE BOLTED TO SIDES, CENTER & REAR	
M BOTTOM RAIL	7GA 50,000# YIELD STEEL J-RAIL	
N K PIN TO REAR AXLE	43'6"	
O KING PIN	PIN SET BACK 36" / 1/4" 100,000# YIELD STEEL PLATE & CHANNEL	
P SUB-FRAME	8" x 4" x 1/4" x 50,000# YIELD STEEL TUBE EXTENDED PAST DRIVE UNIT	
Q LANDING GEAR	FLEET CRAFT, DRIVER SIDE CRANK	
R-S GEAR SUPPORTS	7GA STEEL / 3" CHANNEL	
T SUSPENSION	HUTCH 9700 SPRING TANDEM	
U AXLES	(2) 5" ROUND 25,000# SET BACK	
V HUBS	10-STUD STEEL UNIMOUNT	
W RIMS	(8) 8.25 x 22.5 STEEL 10-HOLE	
BRAKES	AIR / 16.5" x 7" 20,000#	
ANTI-LOCK SYSTEM	(4) SENSOR / (2) MODUAL	
X TIRES	(8) 11R x 22.5 14 PLY	
Y TAILGATE	.160 ALUMINUM SINGLE SWING / HEAVY DUTY HINGES ON CURBSIDE / MANUAL LATCH	
Z BULKHEAD	.160 ALUMINUM SHEET & POST / 10" CORNER RADIOUS / FRONT WINDOW	
CROSSMEMBERS	4" x 3.2" 80,000# YIELD STEEL I-BEAM ON 13.63" CENTERS	
TARP END CAPS	YES	
TARP SYSTEM	SIDE TO SIDE ROLL TARP / REAR OR FRONT CRANK	
TARP MATERIAL	VINYL 22OZ	
FLOOR SYSTEM	KEITH 3" DRIVE UNIT / WHOL CWS FLOOR SLATS	
LADDER	ALUMINUM MOUNTED DRIVER SIDE FRONT	
CATWALK	YES - WITH RAILING	
LIGHTS	7W PLUG "TRUCK LITE 45" - ALL LED - STAND. DOT PACKAGE - TAIL LIGHTS IN THE REAR DOOR	
MUD FLAPS	WILKENS RUBBER AT REAR	
BUMPER	ICC 7GA 50,000# YIELD STEEL SELF CLEAN / TOW HOOKS / PUSH BUMPER	
HYDRAULIC FITTINGS	QUICK COUPLERS IN CENTER OF BULK HEAD	
METAL PREPREATION	STEEL SANDBLASTED AND EXPOXY PRIME	
PAINT	STEEL PAINTED BLACK - ALL ALUMINUM LEFT NATURAL	
MISC	DUST CAPS / DOT BOX /	
OPTIONS INCLUDED	.160 ALUM SIDE WALLS - LADDER - CATWALK - WHOL FLOOR	
WEIGHT +/- 3%	18,700LBS	

ALL QUOTES SUBJECT TO CHANGE AFTER 30 DAYS

TOTAL W/OPTIONS

\$112,441.00

FEDERAL EXCISE TAX 12% - (TIRE CREDIT)

EXEMPT

OPTIONS:

MINNESOTA STATE SALES TAX .06875 + \$125 LICENSE FEE

\$7,855.00

FREIGHT

FOB MORRIS, MN

TOTAL

\$120,296.00

NUMBER OF UNITS

1

TOTAL EACH

\$120,296.00

PO#

DEPOSIT 20% EACH

PO REQUIRED

TOTAL DUE AT DELIVERY EACH

\$120,296.00

BUYER SIGNED: X

WILKENS SIGNED: X

The buyer agrees to accept the equipment listed and described above, on arrival, and to pay therefore the total Cash Price (less any pre-payments

1. That a service charge of 1-1/2% per month will be charged on all past due accounts with a \$1.00 minimum. This is an annual percentage rate of 18%.

2. *Special orders are non-cancelable and a minimum of 35% down payment is required on special designed trailer orders. That this document forms a legal and binding contract for both parties herein, undersigned. Any changes, additions, or deletions, must be in writing within 5 days form date accepted by Wilkens Industries, Inc.

3. Any regular orders requested to be cancelled will be subject to 20% of the sale price, service charge, and or the purchaser will forfeit their down payment whichever is greater. Any request to cancel an order shall be made in writing with a detailed explanation. Wilkens Industries, Inc shall have the final approval of a request for cancellation.

4. Owner's manuals are available in electronic form. Bound copies are available at an additional cost.



Manufacturers of **LOAD RUNNER™**
and **X-SERIES™** Solid Waste Transport Trailers
REAR LOADING TRAILERS

INDUSTRIES, INC.

R.R. 3, Box 169

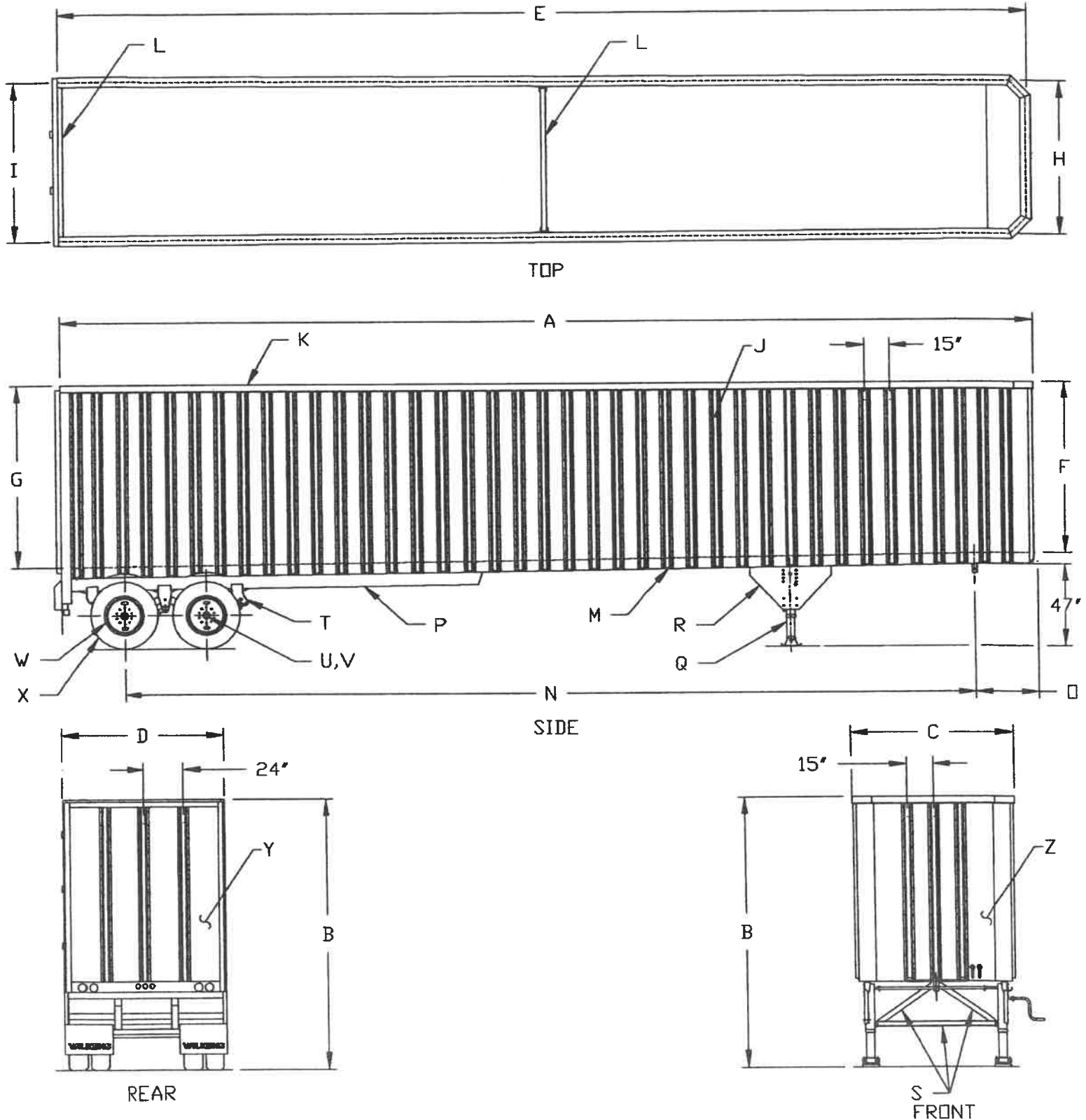
Morris, MN 56267

(320) 589-1971

1-800-833-6045

FAX: (320) 589-1974

ALUMINUM COMPOSITE



WILKENS INDUSTRIES, INC. WARRANTY

WARRANTY COVERAGE

WILKENS INDUSTRIES, INC. warrants to their first Purchaser only, against defects in material and workmanship on parts of only their manufacture for a period of one (1) year from the date of delivery to the first Purchaser, if manufactured according to their recommendation, but subject to the following conditions:

THIS WARRANTY WILL BECOME NULL AND VOID AND OF NO EFFECT IF ANY PART IN QUESTION:

- (1) Has been subject to abuse, misuse, negligence or accident of any type or cause.
- (2) Has been submitted or used with parts other than genuine Wilkens parts.
- (3) Owner/Operator has not read the operation manual/instructions or has not shown any responsibility to ask for proper training and operation of such product.
- (4) Has not followed the required preventative maintenance instructions or has not completed all the post delivery service inspections and requirements.

WARRANTY DISCLAIMERS

THIS WARRANTY IS IN LIEU OF ALL WARRANTIES OF MERCHANTABILITY FITNESS FOR A PARTICULAR PURPOSE, OR OTHER WARRANTIES, EXPRESS OR IMPLIED. THERE ARE NO WARRANTIES WHICH EXTEND BEYOND THE DESCRIPTION ON THE FACE HEREOF. WILKENS AND ITS PURCHASER MUTUALLY AGREE THAT WILKENS SHALL NOT BE LIABLE FOR SPECIAL, INDIRECT, OR CONSEQUENTIAL DAMAGES CAUSED BY THE FAILURE OF ANY PART. ANY PART OR COMPONENT OF THIS PRODUCT NOT MANUFACTURED BY WILKENS WILL BE SUBJECT TO SAID MANUFACTURER'S WARRANTY TERMS AND CONDITIONS. WILKENS WILL ACT AS THE LIAISON FOR THE WARRANTY CLAIMS SUBMITTED FOR SUCH.

REMEDIES

Wilkens and Purchaser mutually agree that Purchaser's sole remedy under this Warranty shall be limited to the repair or replacement at Wilkens option, of any part which is defective as a result of defective material and/or defective workmanship of parts furnished by Wilkens. Wilkens, for a period of one (1) year from the date of purchase, will reimburse labor costs involved in replacing warranted parts, provided prior approval of Wilkens is obtained. A written estimate must be submitted for the work to be done and must be approved prior to any work being done, by Wilkens or its perspective suppliers, to which said work is related. Wilkens solely, shall determine whether or not any part is defective as that term is used in this Warranty. Wilkens reserves the right to require any and all parts to be returned, freight prepaid, to its factory at Morris, MN or to the perspective manufacturer's place of business for inspection. With respect to all parts not manufactured, the respective manufacturer's warranty will be assigned to Purchaser. Any work done, repairs, parts replacement etc., within the warranty period without the prior approval from Wilkens Industries, the cost of such work will be the responsibility of the person, parties, company who approved such work to be done. All warranty requests must be submitted with the V.I.N. number and the warranty number listed below.

Purchaser: _____

WILKENS INDUSTRIES, INC.
184 S County Road 22
Morris, MN 56267

Date of Purchase: _____

VIN _____ Model Number: _____

This warranty document must be signed and returned via mail, email or fax to (320) 589-1974.

I have read this warranty and the owners/operators manual for this product and fully understand the terms and conditions of this warranty agreement.

Signed: _____

Position: _____

Date: _____

One Year Limited Non-Hydraulic Component Warranty

KEITH Manufacturing Co. hereby warrants, only to the first owner of a new **KEITH® Drive system** from the factory or selling distributor that the product (for non-hydraulic components only, such as electrical components, drive frame, cross drives, floor shoes, flooring and components from other suppliers) shall be free from defects in material and workmanship for a period of **one year** after delivery or sale to the first registered owner.

Definition of Normal Use and Service: Normal use and service means the loading and/or unloading of uniformly distributed, non-corrosive material, properly restrained and secured, on properly maintained public roads, with gross vehicle weights not in excess of factory rated capacity. For stationary installations, normal use and service means the conveying of uniformly distributed, noncorrosive materials, with weights not in excess of factory rated capacity.

Sole and Exclusive Remedy: If the product covered hereby fails to conform to the above stated warranty, **KEITH Manufacturing Co.'s** sole liability under this warranty and the owner's sole and exclusive remedy is limited to repair or replacement of the defective part(s) at a facility authorized by **KEITH Manufacturing Co.** This is the owner's sole and exclusive remedy for all contract claims, and all tort claims including those based on the strict liability in tort and negligence. Any defective part(s) must be shipped freight prepaid to the nearest **KEITH North America/South America** facility or nearest **KEITH Europe** facility. Please contact KEITH for additional information on proper locations.

Except As Expressly Set Forth Above, KEITH Manufacturing Co. Makes No Warranties:

Express, implied or statutory, specifically: No warranties of fitness for a particular purpose or warranties of merchantability are made. Further, **KEITH Manufacturing Co.** will not be liable for incidental damages or consequential damages such as, but not limited to, loss of use of the product, damage to the product, towing expenses, attorney's fees and the liability you may have in respect to any other reason.

Tort Disclaimer: **KEITH Manufacturing Co.** shall not have any liability in tort with respect to the products, including any liability based on strict liability in tort and negligence.

If This Warranty Violates Law: To the extent any provision of this warranty, contravenes the law of any jurisdiction, that provision shall be inapplicable in such jurisdiction and the remainder of the warranty shall not be affected thereby.

Warranty Return Policy

- 1.) Contact **KEITH Manufacturing Co.** at 1-800-547-6161 or TechDept@KeithWalkingFloor.com for a "Returned Goods Authorization" (RGA) number before returning any item for repair or replacement. The following information is needed to ensure parts are returned as quickly as possible.

- | | |
|-----------------|------------------------------|
| a. Company name | e. Part number |
| b. Contact name | f. Quantity |
| c. Address | g. Reason for return |
| d. Phone number | h. Customer's account number |

- 2.) Prior approval and a RGA number is needed when returning any unused product for credit. Make sure the RGA number is on the outside of the shipping carton and all paperwork is included. Return all material on a Freight Prepaid Basis.

KEITH® WALKING FLOOR® Drive Unit

Limited Warranty

A summary of the warranty conditions are as follows:

- The warranty period is for the first equipment owner only.
- A warranty card must be filled out and returned to KEITH.
- The standard warranty period is for (1) one year for the Drive system (for non-hydraulic components only, such as electrical components, drive frame, cross drives, floor shoes, flooring and components from other suppliers) from date of sale by trailer manufacturer.
- The limited hydraulic warranty period is for (2) two years for the hydraulic parts and components from date of sale by trailer manufacturer.
- The Drive system must be installed by your trailer builder according to recommended KEITH installation instructions and procedures.
- KEITH maintenance and operating procedures have been properly followed.
- In the case of a malfunction, the trailer manufacturer, and KEITH must be informed immediately.

The following issues are not covered by the warranty:

- Malfunction of equipment, or problems caused by equipment, which was not supplied by KEITH.
- Malfunction caused by the use of dirty oil, or oil of the wrong type.
- Malfunction caused by overheated oil: maximum temperature 140 °F [60 °C].
- Malfunction caused by corrosive materials.
- Malfunction caused by overloading or improper use as stated in KEITH manuals.
- Malfunction caused by improper repair work, or repair work which is carried out by third parties.
- Filter elements and components are subject to normal wear-and-tear and are not warranty items.
- Defects in electrical components caused by incorrect connection and/or incorrect voltage levels.

The warranty is void if:

- The Drive system is used for purposes which have not been recommended by KEITH.
- The wet kit is not as recommended in KEITH manuals.
- The Drive system is not installed properly.
- Loads in excess of legal limits are moved as defined in KEITH manuals and operating instructions.
- Hydraulic components are damaged by excessive heat: 140 °F [60 °C].
- Heat damage caused by a bad hydraulic pump on the truck or hydraulic wet kit.
- Damage caused by using an end dump or dump truck wet kit.
- Heat damage caused by not fully opening and closing the ball valve.

Warranty Information:

Two Year Limited Hydraulic Warranty

KEITH Manufacturing Co. hereby warrants, only to the first owner of a new KEITH® Drive system from the factory or selling distributor, that the Drive system hydraulic parts and hydraulic components shall be warranted as free from defects in material and workmanship for a period of two years to the first registered owner from the date of the sale.

This warranty does not cover normal wear and tear, maintenance, or heat damage. It is not to be construed as a service contract.

Owners Obligation: To qualify for warranty coverage, a warranty card must be completed and the equipment must be subject to normal use and service as described in KEITH manuals and warranty information.

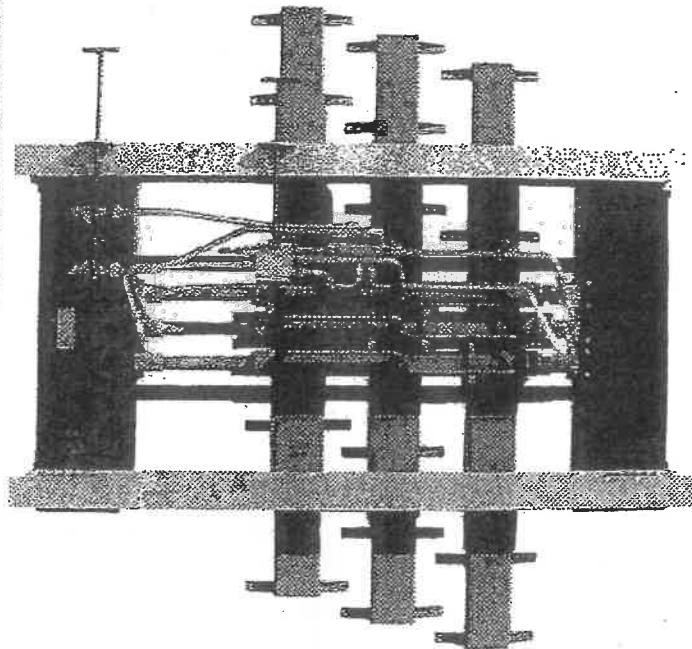
Note: *Prevention of excessive heat in the hydraulic system is the single most important factor for long system life. Bad pumps, improper wet kits and hydraulic restrictions cause excessive heat and will damage the hydraulic system. Heat damage will void the warranty.*

Two Year Warranty*

THE KEITH

RUNNING FLOOR II[®] DX DRIVE

The best selling drive unit in the world.



WALKING FLOOR[®]
ONLY BY KEITH[®]

IDEAL FOR UNLOADING

- Refuse
- Recyclables
- Wood Products
- Grain
- Soil
- Palletized Cargo
- Other Bulk Materials

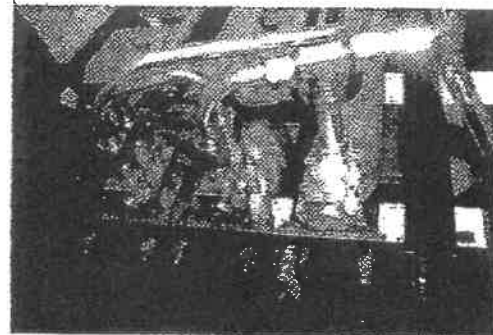
A warranty card must be on file at KEITH Mfg. Co. to qualify for the extended warranty.

* Hydraulics Only.

Flooring, Seal & Bearings are "wear" items.

- Improved Cylinder Design
- Advanced Check Valve Design
- New Tubing with Uniform Design
- Increased Corrosion Resistance
- Long-Lasting Plated Tubing

KEITH, the creator of WALKING FLOOR[®] technology, provides custom unloading systems for specialized applications worldwide.



KEITH Mfg. Co.
1.800.547.6161
www.keithwalkingfloor.com

Date: 12/11/25

DOUG STORCK
TELEPHONE: 800-833-6045
FAX: 320-589-1974
dougs@wilkens-ind.com

DELIVERY DATE: April 1st 2026

SALE PRICE

QUANTITY	(1) - ONE VIN #311	
MODEL	2026 - WILKENS STEEL OPEN TOP WALKING FLOOR TRANSFER TRAILER #501250SPOT	\$120,967.00
CUBIC YARDS	125	
A LENGTH (OUTSIDE)	50'	
B HEIGHT (OUTSIDE)	13' 4"	
C-D OUTSIDE WIDTH	100" (FRONT) / 102" (REAR) 2" TAPER BODY	
E INSIDE LENGTH	49'9"	
F-G INSIDE HEIGHT	104" (FRONT) / 104" (REAR)	
H-I INSIDE WIDTH	94" (FRONT) / 96" (REAR)	
J SIDES	12GA 50,000# MIN YIELD STEEL SIDE SHEETS / 50,000# MIN YIELD FLARED SIDE POSTS 20" O/C	
K TOP RAIL	3" x 5" x 5/16" STEEL TUBE	
L SPREADER BAR	3" x 3" x 1/4" STEEL TUBE BOLTED TO SIDES, CENTER & REAR	
M BOTTOM RAIL	7GA 50,000# YIELD STEEL J-RAIL	
N K PIN TO REAR AXLE	41'6"	
O KING PIN	PIN SET BACK 36" / 1/4" 100,000# YIELD STEEL PLATE & CHANNEL	
P SUB-FRAME	8" x 4" x 1/4" x 50,000# YIELD STEEL TUBE EXTENDED PAST DRIVE UNIT	
Q LANDING GEAR	HOLLAND MARK V / DRIVER SIDE CRANK	
R-S GEAR SUPPORTS	7GA STEEL / 3" CHANNEL	
T SUSPENSION	HUTCH 9700 365-01 SPRING TANDEM 77.5" TRACK / 50" CENTERS	
U AXLES	(2) 5" ROUND 25,000# SET BACK	
V HUBS	10-STUD STEEL UNIMOUNT	
W RIMS	(8) 8.25 x 22.5 STEEL 10-HOLE PAINTED WHITE	
BRAKES	AIR / 16.5" x 7"	
ANTI-LOCK SYSTEM	(4) SENSOR / (2) MODUAL	
X TIRES	(8) 11R x 22.5 14 PLY	
Y TAILGATE	12GA STEEL SINGLE SWING / HEAVY DUTY HINGES ON CURBSIDE / MANUAL LATCH	
Z BULKHEAD	12GA STEEL SHEET & POST / 10" CORNER RADIOUS / FRONT WINDOW	
CROSSMEMBERS	4" x 3.2" 80,000# YIELD STEEL I-BEAM ON 12" CENTERS	
TARP END CAPS	YES	
TARP SYSTEM	SIDE TO SIDE ROLL TARP / REAR OR FRONT CRANK	
TARP MATERIAL	VYNAL 220Z	
FLOOR SYSTEM	KEITH RFII DX 3" x 10" / WHOL HD OVERLAP FLOOR SLAT / REAR T-BLOCKS / STEEL SUB DECK	
LADDER	ALUMINUM DRIVER SIDE	
CATWALK	YES - WITH RAILING	
LIGHTS	7W PLUG "TRUCK LITE 45" - ALL LED - STAND. DOT PACKAGE - TAIL LIGHTS IN THE DOOR	
MUD FLAPS	WILKENS RUBBER AT REAR	
BUMPER	ICC 7GA 50,000# YIELD STEEL SELF CLEAN / TOW HOOKS / PUSH BUMPER	
HYDRAULIC FITTINGS	TEMA QUICK COUPLERS IN CENTER OF BULK HEAD	
METAL PREPREATION	STEEL SANDBLASTED AND EXPOXY PRIME	
PAINT	GRAY ENAMAL	
MISC	DUST CAPS / DOT BOX /	
OPTIONS INCLUDED		
WEIGHT +/- 3%	23,000LBS	

ALL QUOTES SUBJECT TO CHANGE AFTER 30 DAYS

TOTAL W/OPTIONS \$120,967.00

FEDERAL EXCISE TAX 12% - (TIRE CREDIT) EXEMPT

MINNESOTA STATE SALES TAX .06875 + \$125 LICENSE FEE \$8,442.00

FREIGHT QUOTED AT DELIVERY TIME FOB Morris, MN

TOTAL FOR ONE UNIT \$129,409.00

NUMBER OF UNITS 1

TOTAL \$129,409.00

PO# DEPOSIT 20% PO#

TOTAL DUE PRIOR TO DELIVERY \$129,409.00

BUYER SIGNED: X

WILKENS SIGNED: X

The buyer agrees to accept the equipment listed and described above, on arrival, and to pay therefore the total Cash Price (less any pre-payments)

1. That a service charge of 1-1/2% per month will be charged on all past due accounts with a \$1.00 minimum. This is an annual percentage rate of 18%.

2. *Special orders are non-cancelable and a minimum of 35% down payment is required on special designed trailer orders. That this document forms a legal and binding contract for both parties herein, undersigned. Any changes, additions, or deletions, must be in writing within 5 days form date accepted by Wilkens Industries, Inc.

3. Any regular orders requested to be cancelled will be subject to 20% of the sale price, service charge, and or the purchaser will forfeit their down

payment whichever is greater. Any request to cancel an order shall be made in writing with a detailed explanation. Wilkens Industries, Inc shall have the final approval of a request for cancellation.

4. Owner's manuals are available in electronic form. Bound copies are available at an additional cost.



Manufacturer of Transfer Trailers

- Walking Floor® • Tippers
- Live Floors • Recycling Trailers

INDUSTRIES, INC.

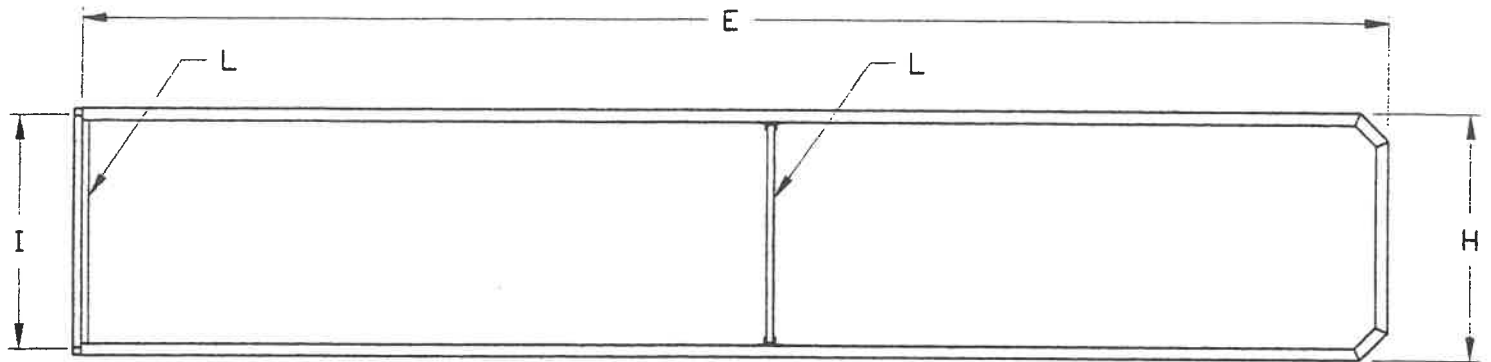
184 South County Road 22 Morris, MN 56267

(320) 589-1971

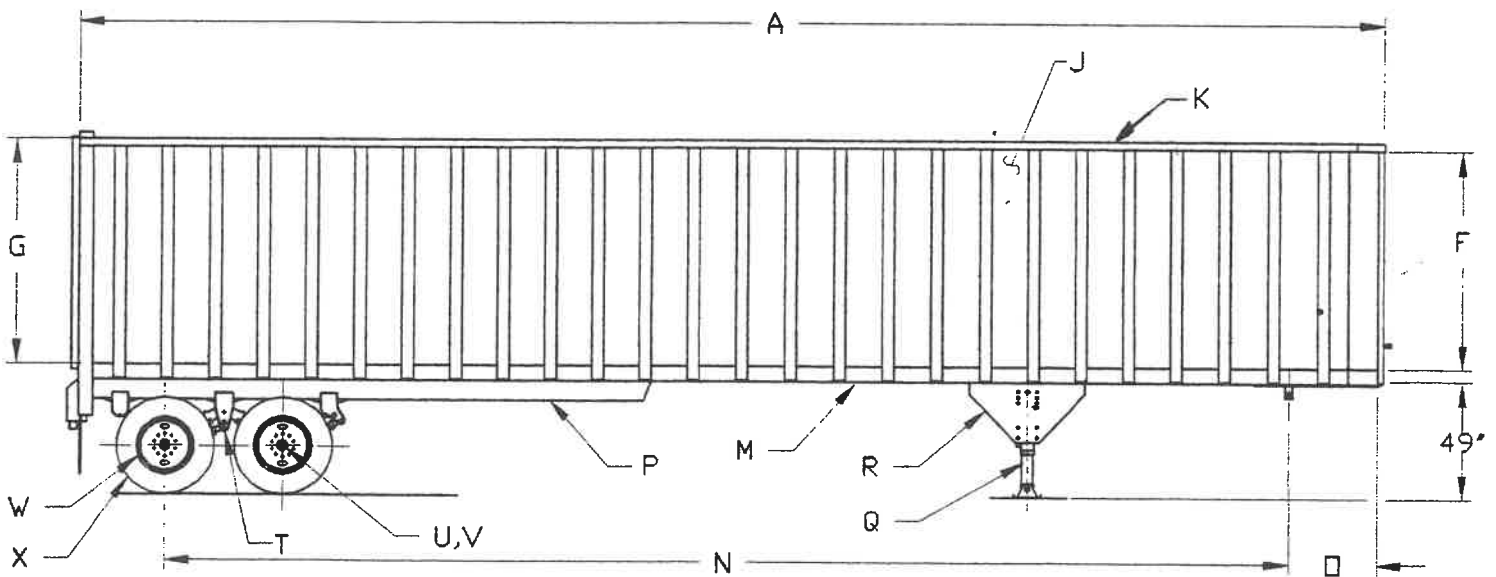
1-800-833-6045

FAX: (320) 589-1974

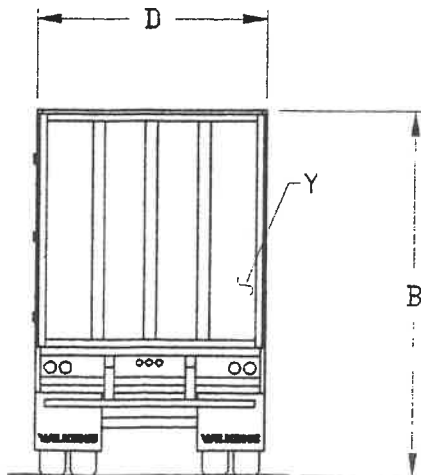
www.wilkens-ind.com



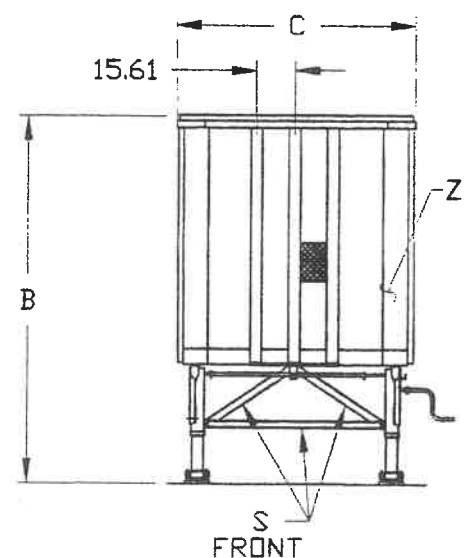
TOP



SIDE



REAR



FRONT

Manufacturer of the patented "X-Series" Expanding Wall Trailer

WILKENS INDUSTRIES, INC. WARRANTY

WARRANTY COVERAGE

WILKENS INDUSTRIES, INC. warrants to their first Purchaser only, against defects in material and workmanship on parts of only their manufacture for a period of one (1) year from the date of delivery to the first Purchaser, if manufactured according to their recommendation, but subject to the following conditions:

THIS WARRANTY WILL BECOME NULL AND VOID AND OF NO EFFECT IF ANY PART IN QUESTION:

- (1) Has been subject to abuse, misuse, negligence or accident of any type or cause.
- (2) Has been submitted or used with parts other than genuine Wilkens parts.
- (3) Owner/Operator has not read the operation manual/instructions or has not shown any responsibility to ask for proper training and operation of such product.
- (4) Has not followed the required preventative maintenance instructions or has not completed all the post delivery service inspections and requirements.

WARRANTY DISCLAIMERS

THIS WARRANTY IS IN LIEU OF ALL WARRANTIES OF MERCHANTABILITY FITNESS FOR A PARTICULAR PURPOSE, OR OTHER WARRANTIES, EXPRESS OR IMPLIED. THERE ARE NO WARRANTIES WHICH EXTEND BEYOND THE DESCRIPTION ON THE FACE HEREOF. WILKENS AND ITS PURCHASER MUTUALLY AGREE THAT WILKENS SHALL NOT BE LIABLE FOR SPECIAL, INDIRECT, OR CONSEQUENTIAL DAMAGES CAUSED BY THE FAILURE OF ANY PART. ANY PART OR COMPONENT OF THIS PRODUCT NOT MANUFACTURED BY WILKENS WILL BE SUBJECT TO SAID MANUFACTURER'S WARRANTY TERMS AND CONDITIONS. WILKENS WILL ACT AS THE LIAISON FOR THE WARRANTY CLAIMS SUBMITTED FOR SUCH.

REMEDIES

Wilkens and Purchaser mutually agree that Purchaser's sole remedy under this Warranty shall be limited to the repair or replacement at Wilkens option, of any part which is defective as a result of defective material and/or defective workmanship of parts furnished by Wilkens. Wilkens, for a period of one (1) year from the date of purchase, will reimburse labor costs involved in replacing warranted parts, provided prior approval of Wilkens is obtained. A written estimate must be submitted for the work to be done and must be approved prior to any work being done, by Wilkens or its perspective suppliers, to which said work is related. Wilkens solely, shall determine whether or not any part is defective as that term is used in this Warranty. Wilkens reserves the right to require any and all parts to be returned, freight prepaid, to its factory at Morris, MN or to the perspective manufacturer's place of business for inspection. With respect to all parts not manufactured, the respective manufacturer's warranty will be assigned to Purchaser. Any work done, repairs, parts replacement etc., within the warranty period without the prior approval from Wilkens Industries, the cost of such work will be the responsibility of the person, parties, company who approved such work to be done. All warranty requests must be submitted with the V.I.N. number and the warranty number listed below.

Purchaser: _____

WILKENS INDUSTRIES, INC.
184 S County Road 22
Morris, MN 56267

Date of Purchase: _____

VIN _____ Model Number: _____

This warranty document must be signed and returned via mail, email or fax to (320) 589-1974.

I have read this warranty and the owners/operators manual for this product and fully understand the terms and conditions of this warranty agreement.

Signed: _____

Position: _____

Date: _____

One Year Limited Non-Hydraulic Component Warranty

KEITH Manufacturing Co. hereby warrants, only to the first owner of a new **KEITH® Drive system** from the factory or selling distributor that the product (for non-hydraulic components only, such as electrical components, drive frame, cross drives, floor shoes, flooring and components from other suppliers) shall be free from defects in material and workmanship for a period of **one year** after delivery or sale to the first registered owner.

Definition of Normal Use and Service: Normal use and service means the loading and/or unloading of uniformly distributed, non-corrosive material, properly restrained and secured, on properly maintained public roads, with gross vehicle weights not in excess of factory rated capacity. For stationary installations, normal use and service means the conveying of uniformly distributed, noncorrosive materials, with weights not in excess of factory rated capacity.

Sole and Exclusive Remedy: If the product covered hereby fails to conform to the above stated warranty, **KEITH Manufacturing Co.'s** sole liability under this warranty and the owner's sole and exclusive remedy is limited to repair or replacement of the defective part(s) at a facility authorized by **KEITH Manufacturing Co.** This is the owner's sole and exclusive remedy for all contract claims, and all tort claims including those based on the strict liability in tort and negligence. Any defective part(s) must be shipped freight prepaid to the nearest **KEITH North America/South America** facility or nearest **KEITH Europe** facility. Please contact KEITH for additional information on proper locations.

Except As Expressly Set Forth Above, KEITH Manufacturing Co. Makes No Warranties:

Express, implied or statutory, specifically: No warranties of fitness for a particular purpose or warranties of merchantability are made. Further, **KEITH Manufacturing Co.** will not be liable for incidental damages or consequential damages such as, but not limited to, loss of use of the product, damage to the product, towing expenses, attorney's fees and the liability you may have in respect to any other reason.

Tort Disclaimer: **KEITH Manufacturing Co.** shall not have any liability in tort with respect to the products, including any liability based on strict liability in tort and negligence.

If This Warranty Violates Law: To the extent any provision of this warranty, contravenes the law of any jurisdiction, that provision shall be inapplicable in such jurisdiction and the remainder of the warranty shall not be affected thereby.

Warranty Return Policy

1.) Contact **KEITH Manufacturing Co.** at 1-800-547-6161 or TechDept@KeithWalkingFloor.com for a "Returned Goods Authorization" (RGA) number before returning any item for repair or replacement. The following information is needed to ensure parts are returned as quickly as possible.

- | | |
|-----------------|------------------------------|
| a. Company name | e. Part number |
| b. Contact name | f. Quantity |
| c. Address | g. Reason for return |
| d. Phone number | h. Customer's account number |

2.) Prior approval and a RGA number is needed when returning any unused product for credit. Make sure the RGA number is on the outside of the shipping carton and all paperwork is included. Return all material on a Freight Prepaid Basis.

KEITH® WALKING FLOOR® Drive Unit

Limited Warranty

A summary of the warranty conditions are as follows:

- The warranty period is for the first equipment owner only.
- A warranty card must be filled out and returned to KEITH.
- The standard warranty period is for (1) one year for the Drive system (for non-hydraulic components only, such as electrical components, drive frame, cross drives, floor shoes, flooring and components from other suppliers) from date of sale by trailer manufacturer.
- The limited hydraulic warranty period is for (2) two years for the hydraulic parts and components from date of sale by trailer manufacturer.
- The Drive system must be installed by your trailer builder according to recommended KEITH installation instructions and procedures.
- KEITH maintenance and operating procedures have been properly followed.
- In the case of a malfunction, the trailer manufacturer, and KEITH must be informed immediately.

The following issues are not covered by the warranty:

- Malfunction of equipment, or problems caused by equipment, which was not supplied by KEITH.
- Malfunction caused by the use of dirty oil, or oil of the wrong type.
- Malfunction caused by overheated oil: maximum temperature 140 °F [60 °C].
- Malfunction caused by corrosive materials.
- Malfunction caused by overloading or improper use as stated in KEITH manuals.
- Malfunction caused by improper repair work, or repair work which is carried out by third parties.
- Filter elements and components are subject to normal wear-and-tear and are not warranty items.
- Defects in electrical components caused by incorrect connection and/or incorrect voltage levels.

The warranty is void if:

- The Drive system is used for purposes which have not been recommended by KEITH.
- The wet kit is not as recommended in KEITH manuals.
- The Drive system is not installed properly.
- Loads in excess of legal limits are moved as defined in KEITH manuals and operating instructions.
- Hydraulic components are damaged by excessive heat: 140 °F [60 °C].
- Heat damage caused by a bad hydraulic pump on the truck or hydraulic wet kit.
- Damage caused by using an end dump or dump truck wet kit.
- Heat damage caused by not fully opening and closing the ball valve.

Warranty Information:

Two Year Limited Hydraulic Warranty

KEITH Manufacturing Co. hereby warrants, only to the first owner of a new KEITH® Drive system from the factory or selling distributor, that the Drive system hydraulic parts and hydraulic components shall be warranted as free from defects in material and workmanship for a period of two years to the first registered owner from the date of the sale.

This warranty does not cover normal wear and tear, maintenance, or heat damage. It is not to be construed as a service contract.

Owners Obligation: To qualify for warranty coverage, a warranty card must be completed and the equipment must be subject to normal use and service as described in KEITH manuals and warranty information.

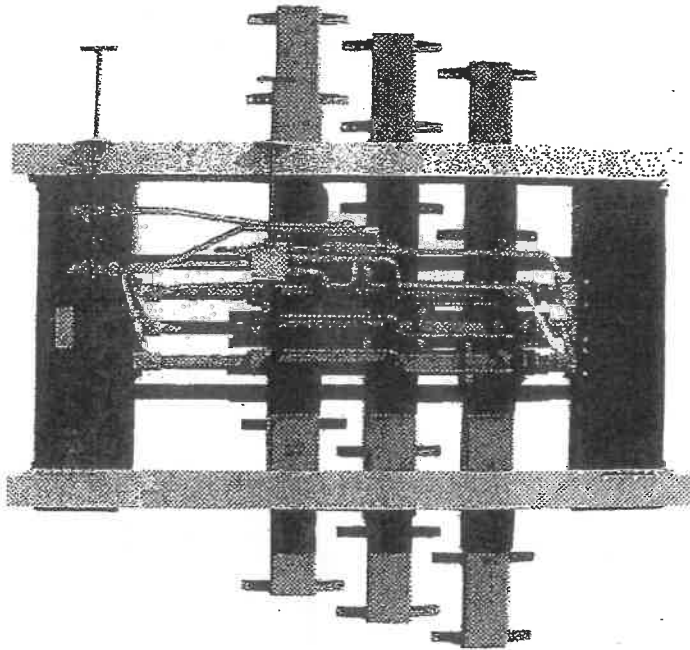
Note: *Prevention of excessive heat in the hydraulic system is the single most important factor for long system life. Bad pumps, improper wet kits and hydraulic restrictions cause excessive heat and will damage the hydraulic system. Heat damage will void the warranty.*

Two Year Warranty*

THE KEITH

RUNNING FLOOR II[®] DX DRIVE

The best selling drive unit in the world.



WALKING FLOOR[®]
ONLY BY KEITH

IDEAL FOR UNLOADING

- Refuse
- Recyclables
- Wood Products
- Grain
- Soil
- Palletized Cargo
- Other Bulk Materials

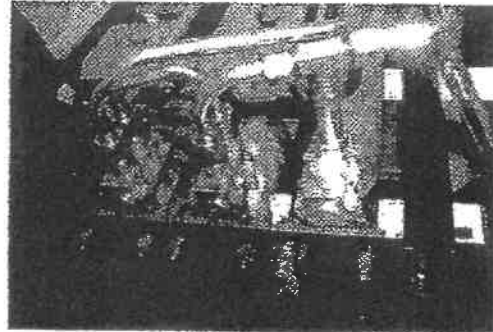
A warranty card must be on file at KEITH Mfg. Co. to qualify for the extended warranty.

* Hydraulics Only.

Flooring, Seal & Bearings are "wear" items.

- Improved Cylinder Design
- Advanced Check Valve Design
- New Tubing with Uniform Design
- Increased Corrosion Resistance
- Long-Lasting Plated Tubing

KEITH, the creator of WALKING FLOOR[®] technology, provides custom unloading systems for specialized applications worldwide.



KEITH Mfg. Co.
1.800.547.6161
www.keithwalkingfloor.com



Capital Improvement Expenditure Request Form

Date Requested: 1/6/2026

Department: Land Use/ Environmental Services

Department Head: Steve Skoog

EXPLANATION OF THE REQUEST

Purpose/Need: Purchase Motor Diagnostic Scan Tool

REQUEST AMOUNT: \$ 13,916.33

Savings Achieved (Dollar Amount/Time/ Efficiency): Tool to assist the Department Mechanic diagnose motor repairs.

Are There Sufficient Funds In Your Budget?

Yes ☒ No ☐

Is this included in your department's 5-Year Capital Improvement Plan?

Yes ☐ No ☒

Please explain further, if necessary: This tool is similar to the diagnostic scan tool that is used by the Hwy Dept Mechanics. This will enable the Mechanic to diagnose motor problems sooner resulting in less equipment time down time. This tool will work on both trucks and off-road equipment. The purchase price includes 3-year software and service warranty. There were two quotes received, they are: 1) Noregon Systems LLC – JPRO Diagnostic Service Kit with 3-year subscription = \$13,120.00

2) Snap-on/Hemenway Tools, LLC – ProLink Plus with 3 year software and service warranty = \$13,916.33.

This request was reviewed by the Environmental Services Committee, and it recommended supporting this purchase request because the software has local support and it is a better fit to diagnose the equipment being serviced on the Solid Waste Campus.

Action Taken (If different than request): Request a Board motion approving the purchase of Snap-on Diagnostic Tool part #EEHD754AISVP1 with a 3-year software and service plan for \$13,916.33.

Date Request Completed: Click or tap to enter a date.

Item Number	Description	Price Group	List Price	Net Price
EEHD499098	PRO-LINK EDGE HDMI WS ADAPTER	Q00	40.75	30.11
EEHD509011	NATO ADAPTER	I06	393.49	393.49
EEHD604120	PLC ADAPTER ABS	Q00	453.00	334.68
EEHD703004	PRO-LINK EDGE MASTER KIT V2	Q00	15,825.00	11,691.51
EEHD703004CERT	PRO-LINK EDGE MASTER KIT V2-CE	Q00	82,000.00	60,581.60
EEHD703004K	PRO-LINK EDGE MASTER KIT V2	Q00	16,510.00	12,197.59
EEHD754A	PRO-LINK PLUS	Q00	10,995.00	8,123.11
EEHD754AISVP1	PROLINK PLUS & 1YR SFTWPLAN	H00	13,190.00	10,441.20
EEHD754AISVP3	PROLINK PLUS & IND 3YR SFTPLAN	H00	17,580.00	13,916.33
EEHD798021	POCKETIQ2 ABS PLC DPF REGEN V2	Q00	3,810.00	2,814.83
EEHD841006	PSI ENGINES EDGE LIVE JUNE2021	Q00	1,020.00	753.58
EEHD841048	LMT 2021 EDGE LIVE AUG2021	Q00	1,625.00	1,200.55
EEHD841048U	LMT 2021 EDGE UPDATE	Q00	900.00	664.92
EEHD842011	VOLVO MACK EDGE V4	Q00	1,085.00	801.60
EEHD842011U	VOLVO MACK EDGE V4 UPDATE	Q00	730.00	539.32
EEHD842015	DETROIT DIESEL EDGE SUITE V2	Q00	1,860.00	1,374.17
EEHD842021	ABS EDGE V2	Q00	1,785.00	1,318.76
EEHD842021U	ABS EDGE V2 UPDATE	Q00	865.00	639.06
EEHD843003	CUMMINS ENGINE V5	D00	1,535.00	1,020.62
EEHD843003U	CUMMINS ENGINE V5 UPDATE	D00	675.00	448.81
EEHD843015	DETROIT DIESEL EDGE SUITE V4	Q00	1,795.00	1,326.15
EEHD843015U	DETROIT DIESEL EDGE SUITE V4 UP	Q00	1,005.00	742.49
EEHD843015UNS	DETROIT DIESEL EDGE SUITE V4 UP	Q00	1,005.00	742.49
EEHD843025	HINO SW SUITE PRO-LINK EDGE V2	Q00	1,185.00	875.48
EEHD843025NS	HINO SW SUITE PRO-LINK EDGE V2	Q00	1,185.00	875.48
EEHD843025U	HINO SW SUITE PRO-LINK EDGE V2	Q00	685.00	506.08
EEHD843025UNS	HINO SW SUITE PRO-LINK EDGE V2	Q00	685.00	506.08
EEHD844015	DDEC / DTNA EDGE SUITE V5	Q00	1,757.40	1,298.37
EEHD844015U	DDEC DTNA EDGE SUITE V5 UPDATE	Q00	985.00	727.72
EEHD844034	PACCAR SWSUITE PROLINK EDGE V2	Q00	985.00	727.72
EEHD844034NS	PACCAR SW SUITE PROLINK EDGE V	Q00	975.00	720.33
EEHD844034U	PACCAR SW SUITE PROLINK EDG V2	Q00	717.10	529.79
EEHD844048	LMT 2024 EDGE	Q00	1,465.00	1,082.34
EEHD844048U	LMT 2024 EDGE UPDATE	Q00	712.05	526.06
EEHD849005	ALLISON SW SUITE PROLINK EDGE	Q00	1,230.00	908.72
EEHD849005NS	ALLISON SW STE-EDGE NON SHIP	Q00	1,230.00	908.72
EEHD849010	INTERNAT SW SUITE PROLIK EDGE	Q00	1,860.00	1,374.17
EEHD849010NS	INTERNATIONAL SW STE-EDGE	Q00	1,860.00	1,374.17
EEHD849024	CAT SW SUITE PROLINK EDGE	Q00	1,860.00	1,374.17
EEHD849024NS	CAT SW STE-EDGE NON SHIP	Q00	1,860.00	1,374.17
EEHD849034	PACCAR SW SUITE PROLINK EDGE	Q00	1,080.00	797.90
EEHD849034NS	PACCAR SW-EDGE NON SHIP	Q00	1,080.00	797.90
EEHD859000	ETECHNICIAN 2.0 PC SW	I06	2,533.20	2,533.20
EEHD861006	PSI ENGINES ULTRA LIVE JUN2021	Q00	1,185.00	875.48
EEHD861048	LMT 2021 ULTRA LIVE AUG2021	Q00	1,930.00	1,425.88
EEHD861048U	LMT 2021 ULTRA UPDATE LIVE AUG	Q00	1,045.00	772.05
EEHD862003	CUMMINS V4 ULTRA	Q00	1,845.00	1,363.09
EEHD862003U	CUMMINS V4 UPDATE ULTRA	Q00	1,025.00	757.27
EEHD862011	VOLVO MACK ULTRA V4	Q00	1,480.00	1,093.42

PRO-LINK+® Heavy-Duty Diagnostic Scan Tool with 3-Year Software Subscription

- Powerful Repair Functions: Keep the fleet on the road
- Find tough problems with data graphing, 200+ special tests verify component failures and validate repairs, 600+ custom parameters to program vehicle operation and program replacement components
- Windows® Based Operating System: Powerful functions for printing, display outputs, optional inputs, internet access to search for information
- Component Photos: Thousands of digital photos provide detailed, real-world views of components involved with the repair
- Wiring Diagrams: Fault-specific wiring diagrams displaying just the wires making up a particular circuit, plus the entire diagram when needed
- Auto ID and Codes: One button press to automatically scan the vehicle, identify all systems, display all active and inactive faults, and save a report
- Rugged yet sophisticated design developed specifically for the heavy-duty shop environment
- 12" capacitive color touchscreen display for improved readability from any angle—and superior visibility indoors or out
- 9-hour battery life
- Integrated camera with light
- Industry-standard vehicle communicate interface with convenient wired or wireless compatibility

Coverage Included:

- Detroit Diesel®:
 - DDEC Suite 6, 10, 13, 15, 17, 20 V4
 - DDEC Suite 2, 3, 4, 5 V2
 - Detroit Diesel® MBE
- DTNA Transmission • Freightliner® Body and Chassis • Caterpillar®:
 - CAT ACERT
- CAT electronic engines • International®/Navistar®:
 - Navistar® MaxxForce®
 - International®
- Navistar® body and chassis • PACCAR • Cummins® • Volvo®/Mack® • HINO • PSI •

Allison® Transmission:

- CEC1
- WTEC 1k/2k, 3k/4k
- GEN V, GEN IV • ABS Brake • WABCO® brakes • Bendix® brakes • Eaton® brakes • Wabash® brakes • Haldex® brakes • LMT 2024 • Non-proprietary coverage for all makes:
- Heavy-duty standard HDS J1708
- Heavy-duty standard HDS J1939
- OBD-II/EOBD for light/medium-duty trucks
- Includes PR

Item # 2

SQUAD VEHICLES PRICING

12/31/25 Committee Meeting			
<u>Item</u>	<u>PRICER PER</u>	<u>AMOUNT</u>	<u>COST</u>
FORD MARKED SQUAD	\$46,619.44	1	\$46,619.44
FORD UNMARKED SQUAD	\$46,172.44	1	\$46,172.44
CHEVROLET TAHOE MARKED SQUADS (PREVIOUSLY APPROVED)	\$53,641.76	3	\$160,925.28
<u>TOTALS COST</u>			\$253,717.16
2026 BUDGET			\$255,000.00
LEFTOVER BUDGET FOR ADDITIONAL EQUIP			\$1,282.84

Closed Session-

Motion to close the meeting pursuant to Minn. Stat. 13D.05 Subd. 3(b) based on the attorney client privilege to discuss potential and pending legal actions with Teamsters Local 320, including pending grievances.